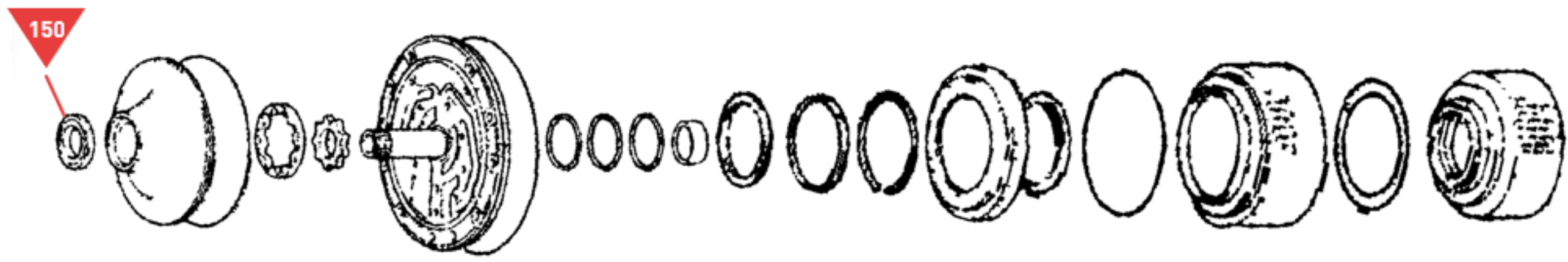
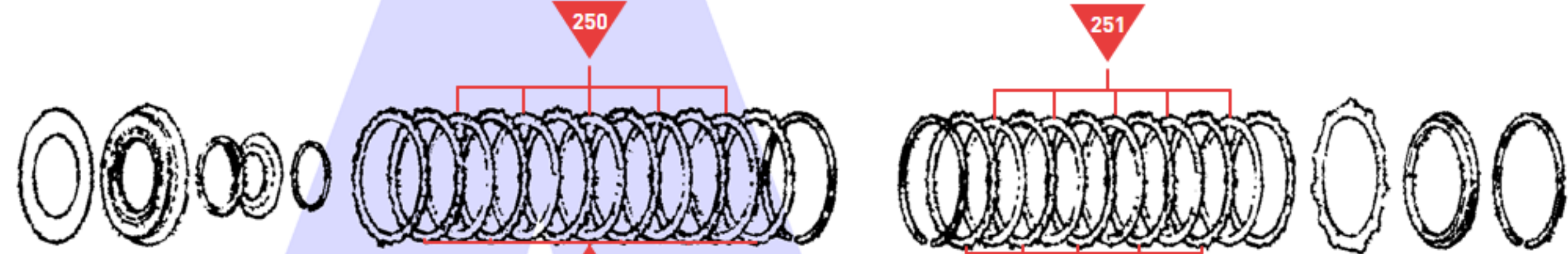


A



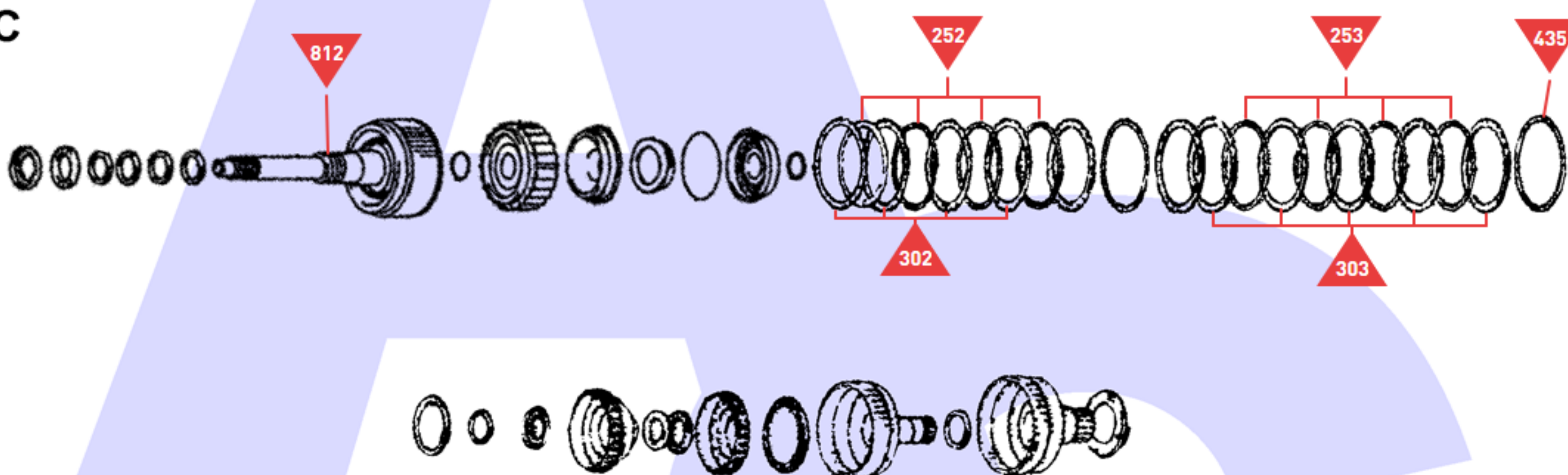
Oil Pump

B



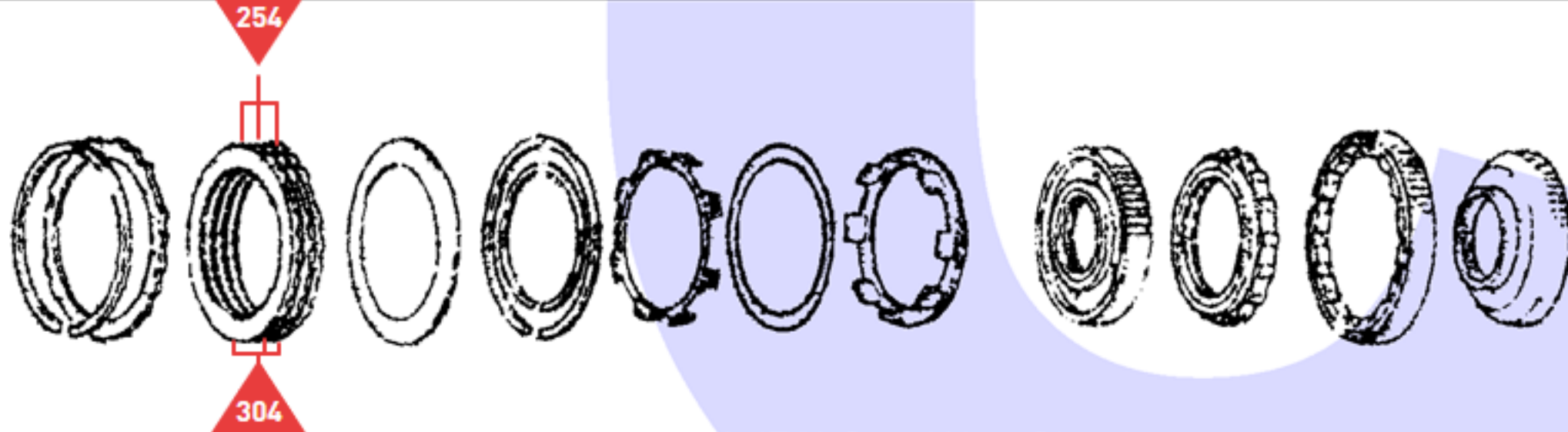
'C2' (Direct) & 'C3' (Reverse) Clutches

C



'C4' (Coast) & 'C1' (Forward) Clutches

D



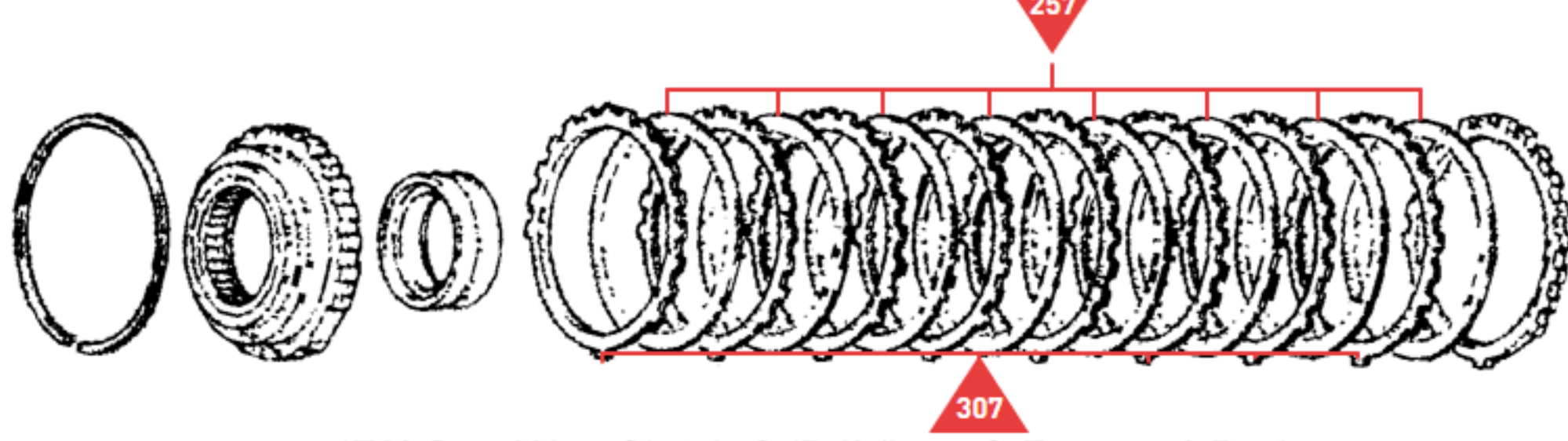
'B3' Brake & 'F2', 'F2' One Way Clutches

E



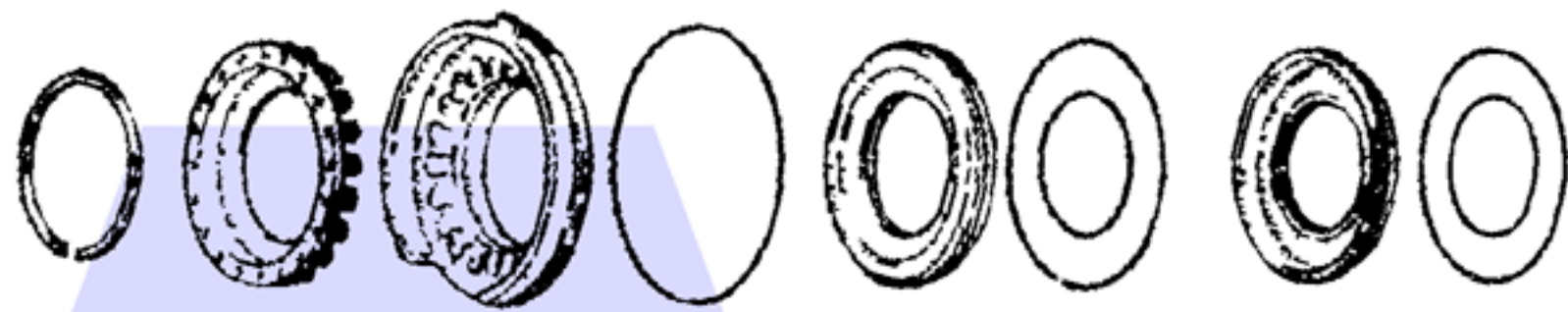
'B1' & 'B2' Brakes

F



'F3' One Way Clutch & 'B4' (Low & Reverse) Brake

G



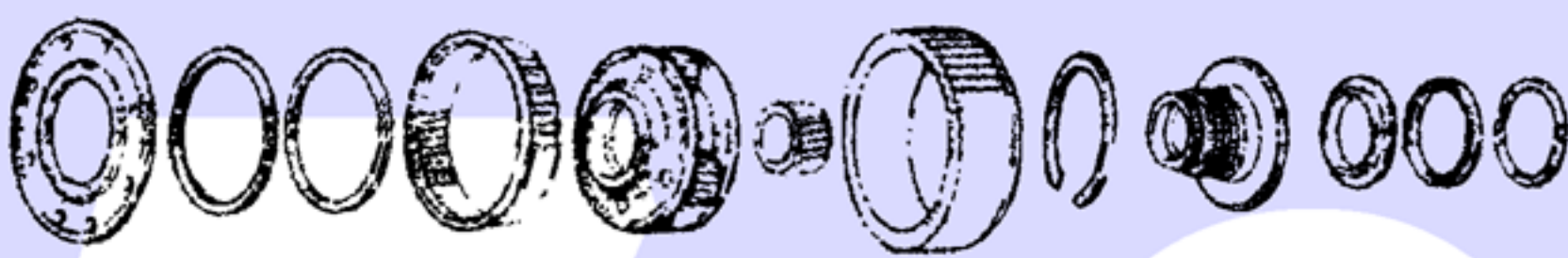
'B4' (Low & Reverse) Brake Piston Assembly

H



Front Planetary Assembly

J



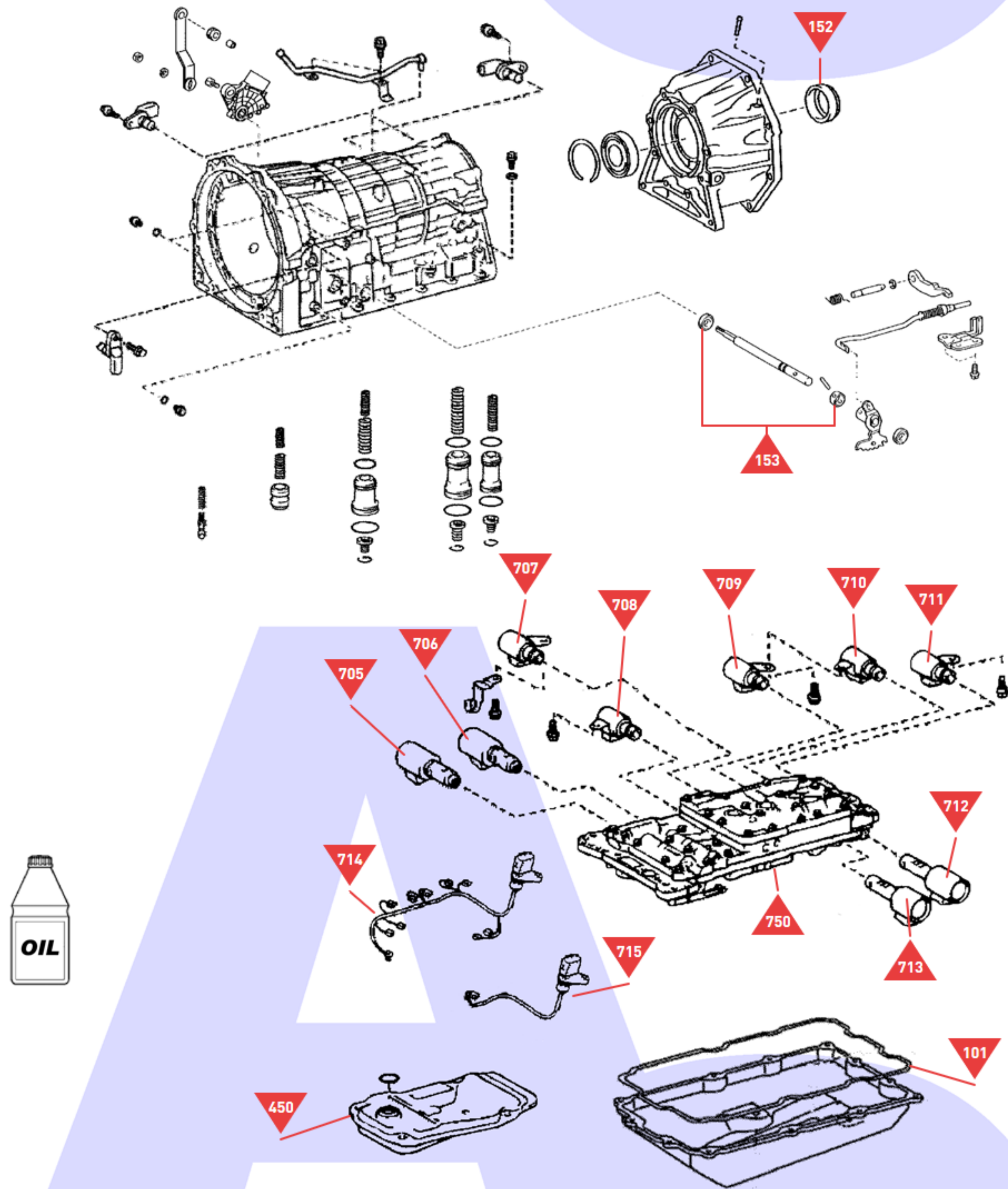
Centre Planetary Assembly

K



Rear Planetary Assembly

L



Casing, Oil Pan, Filter & Valve Body Etc.