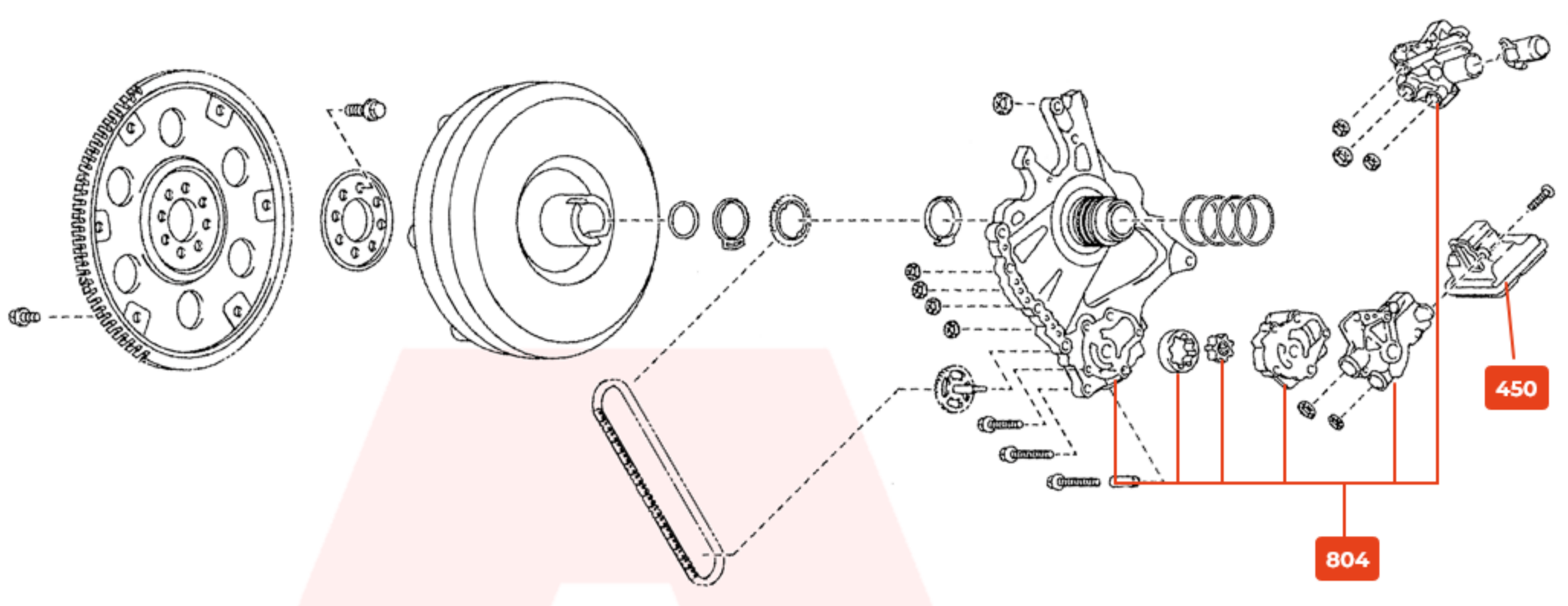


A



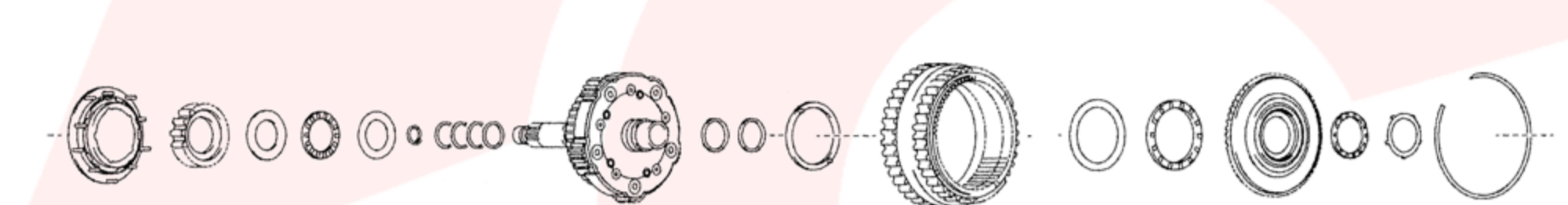
Torque Convert, Oil Pump & Filter

B



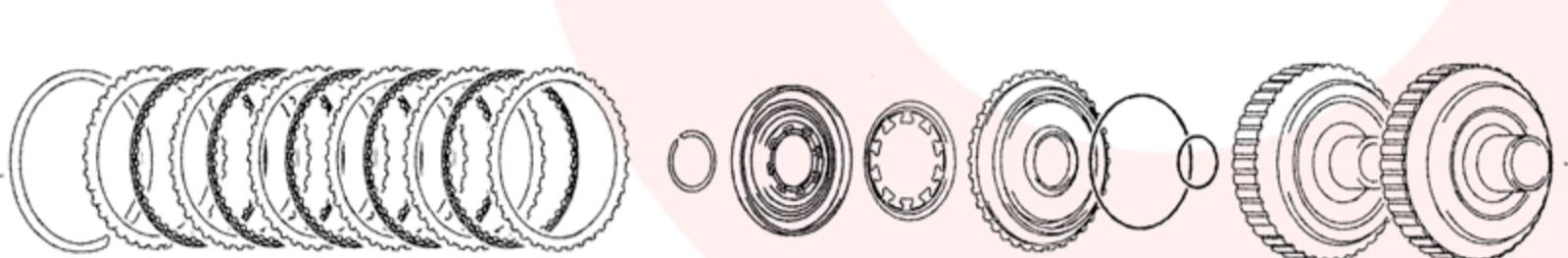
C4 & C3 Clutches

C



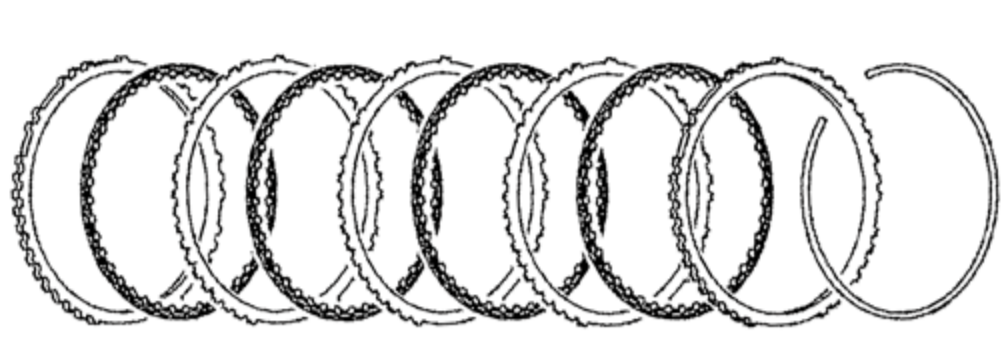
Front Sun Gear, Front Planetary, Ring Gear & Flange

D



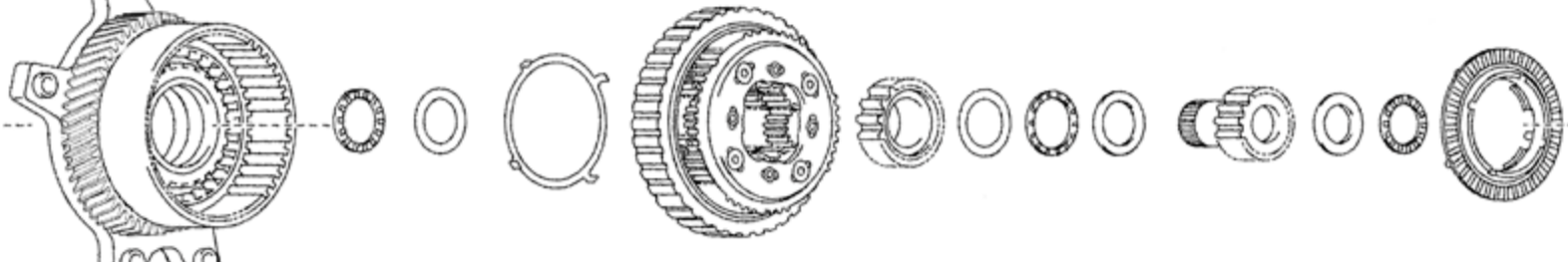
C1 (Forward) Clutch

E



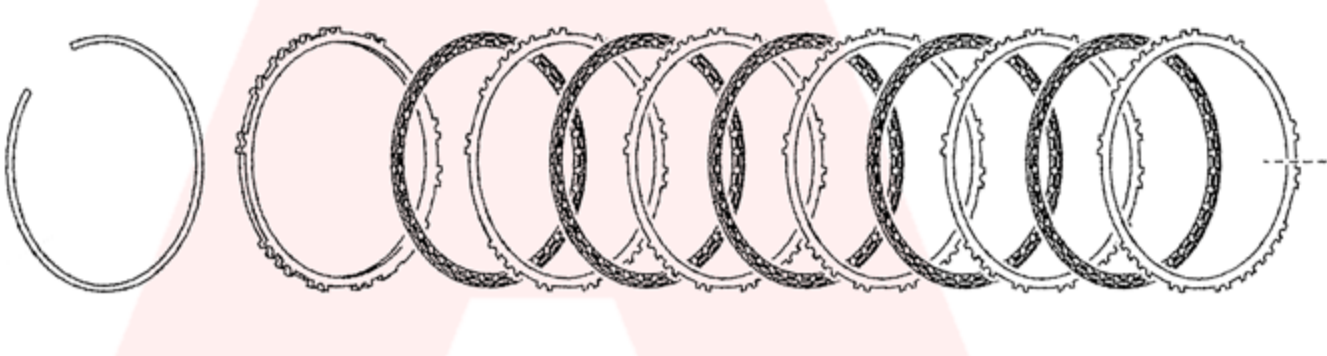
B1 Brake

F



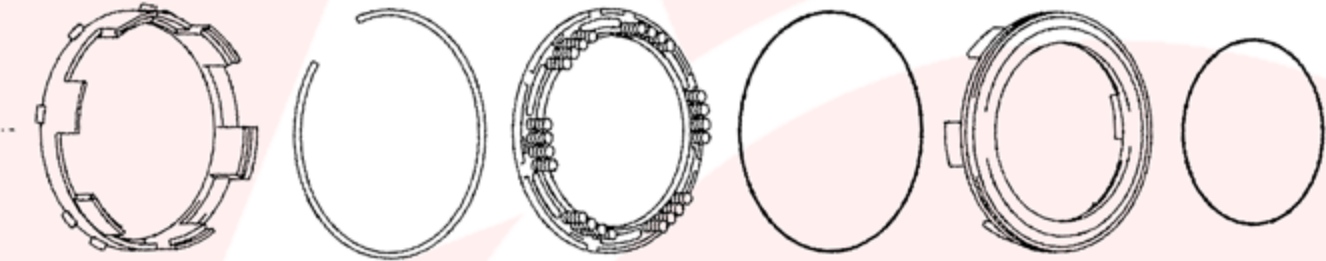
Counter Shaft Drive Gear, Rear Planetary & Sun Gears

G



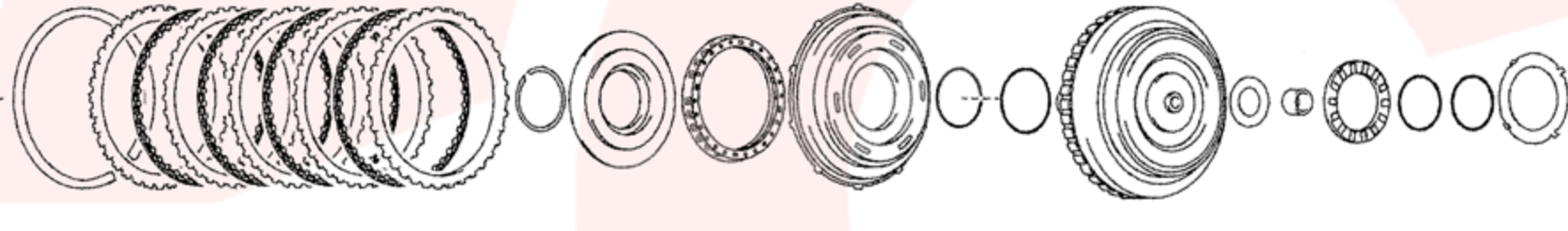
B2 Brake (1st & Reverse)

H



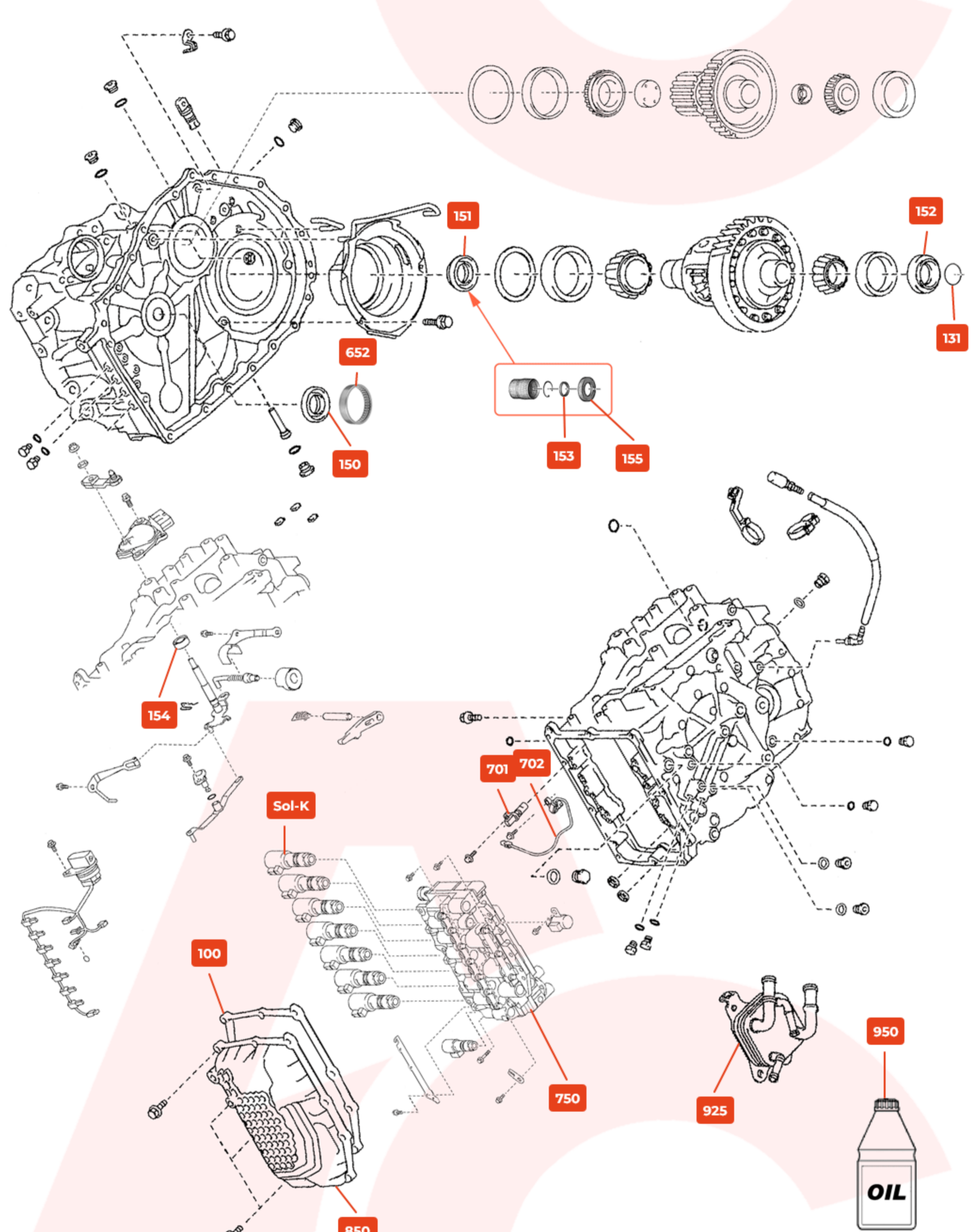
B2 Piston

J



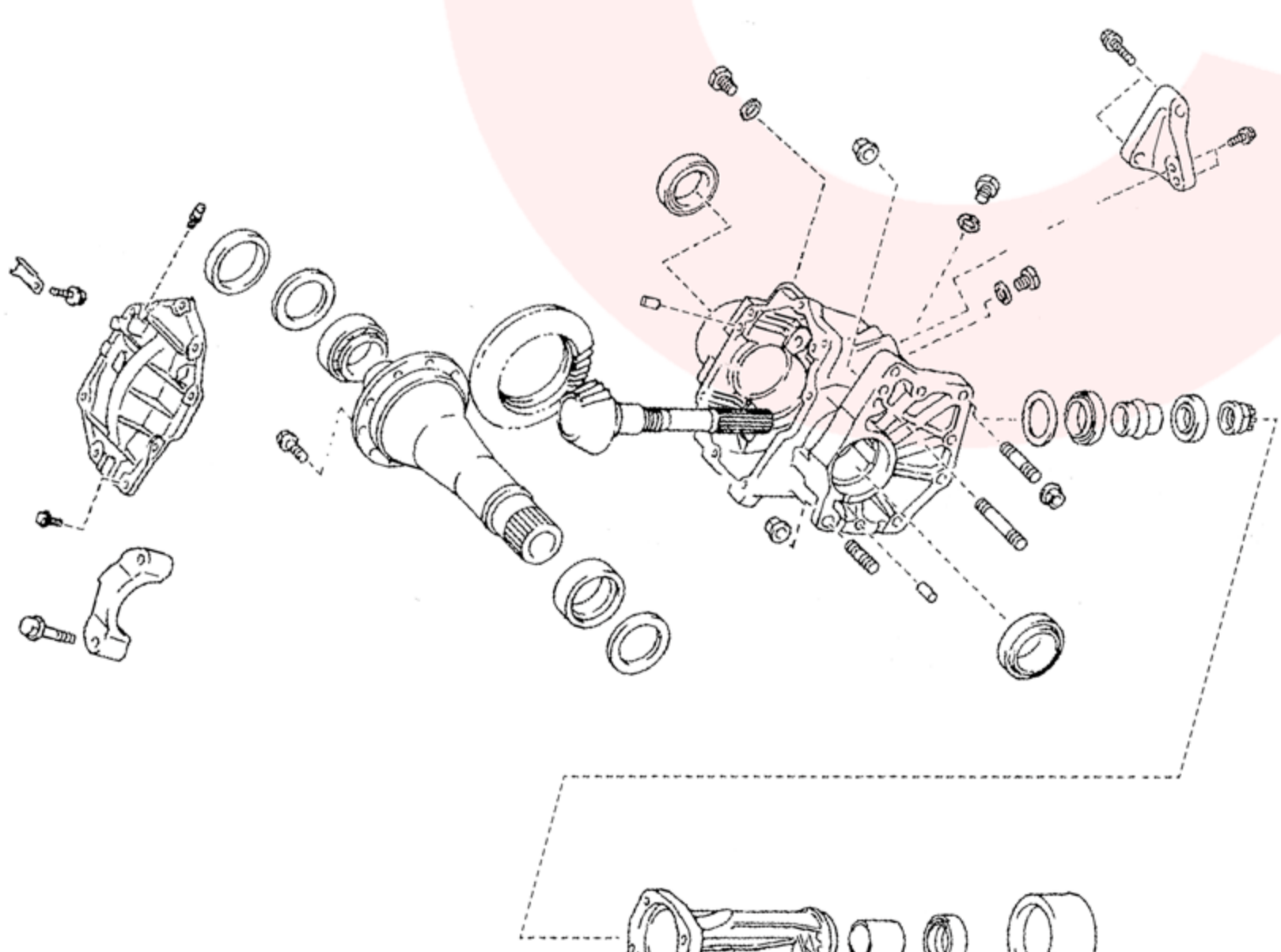
C2 Clutch (Direct)

K



Casings, Differential, Counter Shaft and Valve Body Etc.

L



AWD Transfer Case