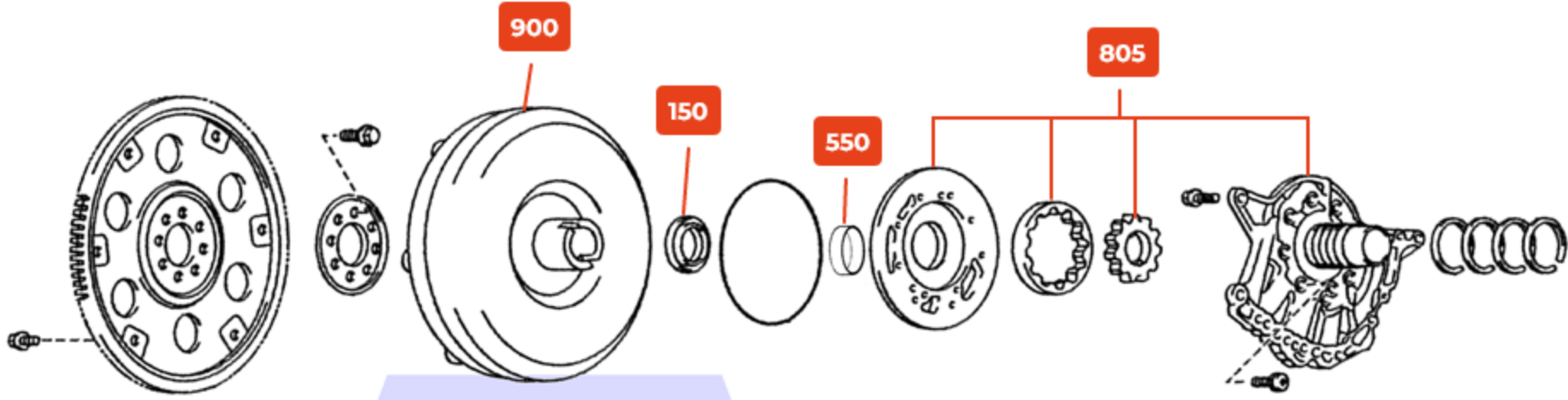
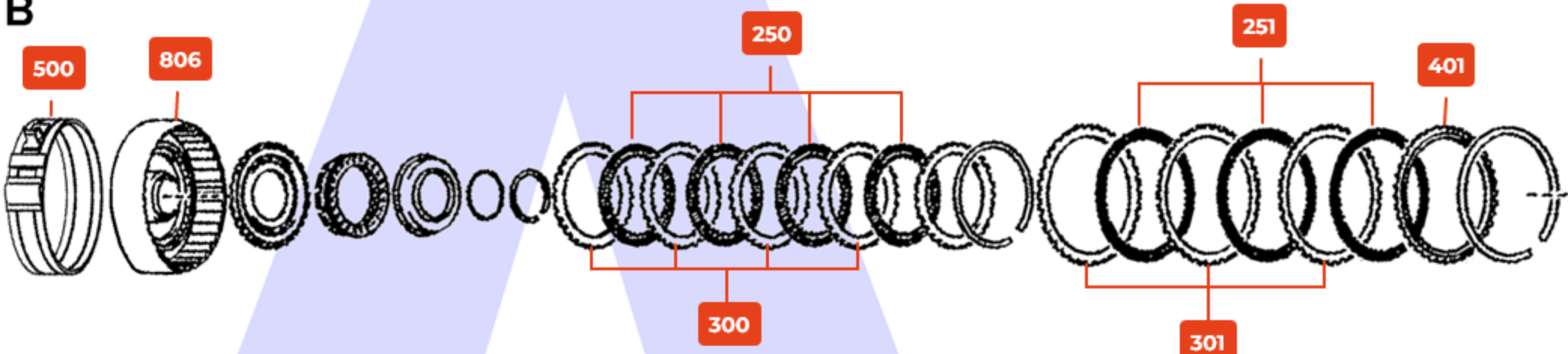


A



Torque Converter & Oil Pump

B



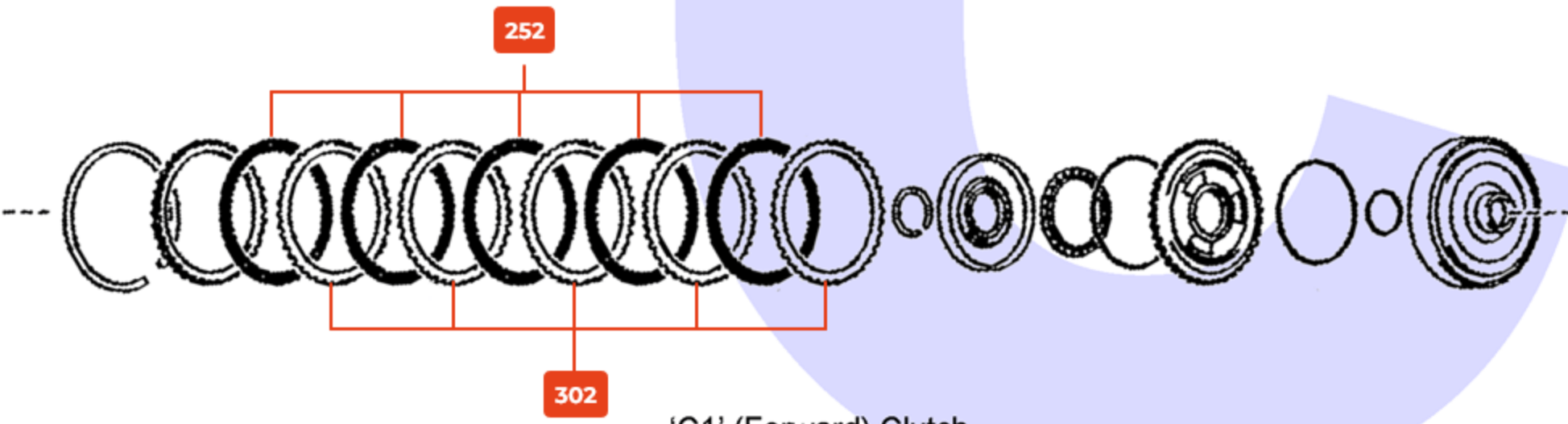
'B1' Band, 'C4' Clutch & 'C3' Clutch

C



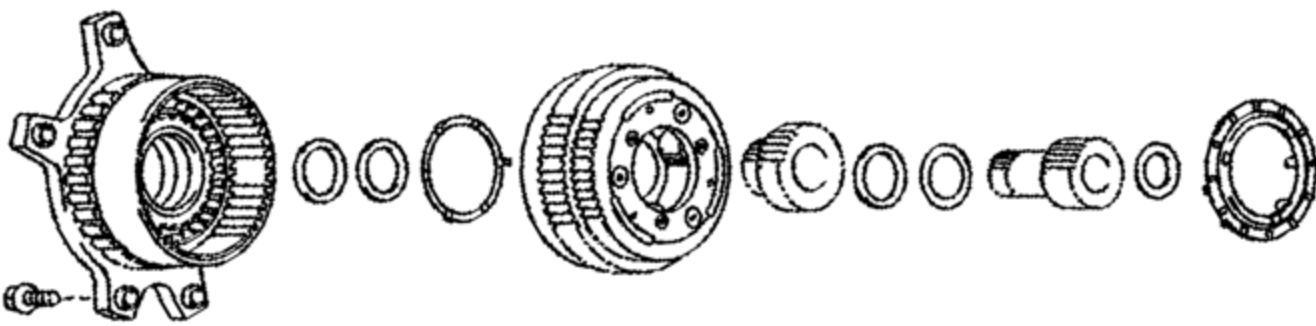
Front Planetary

D



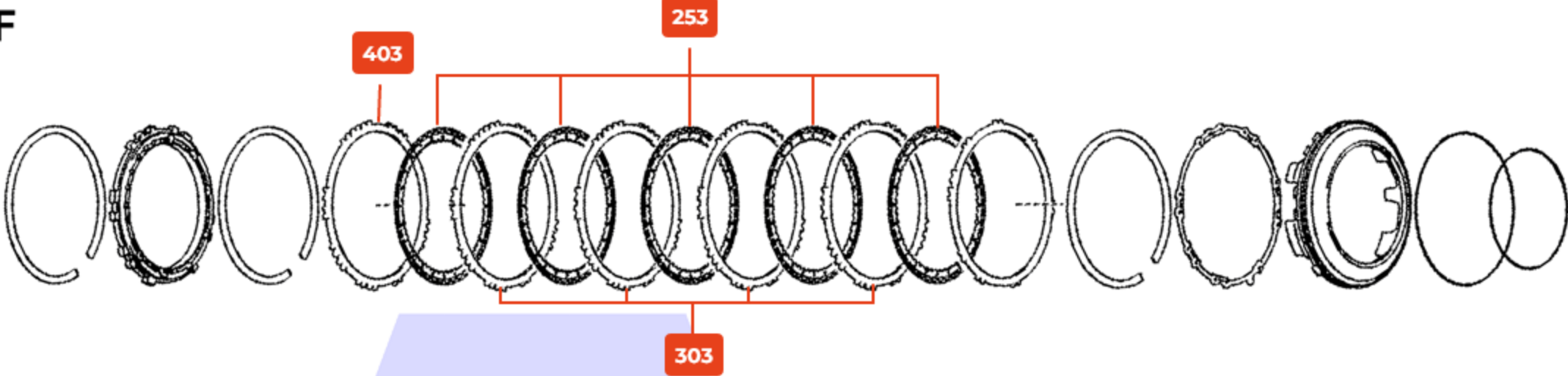
'C1' (Forward) Clutch

E



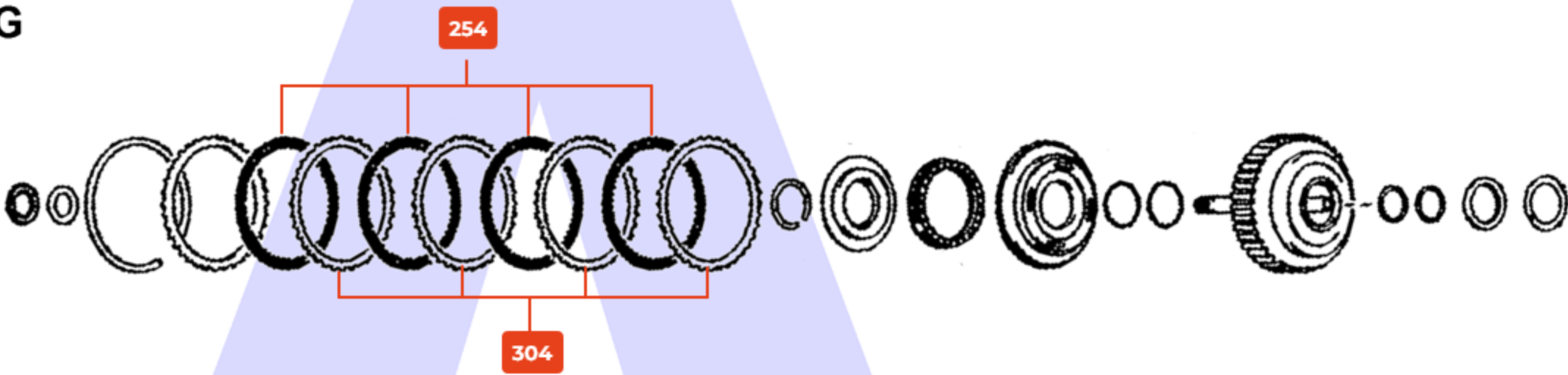
Rear Planetary

F



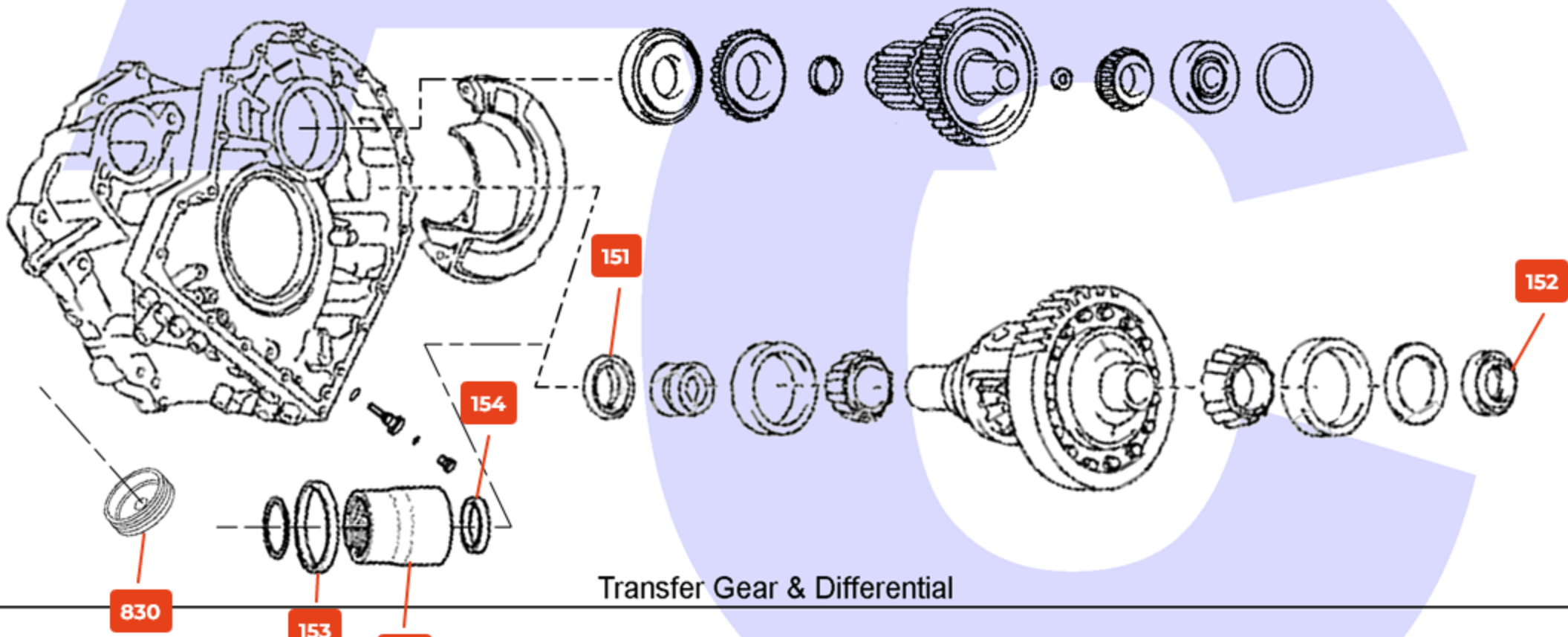
'B2' (First & Reverse) Brake

G



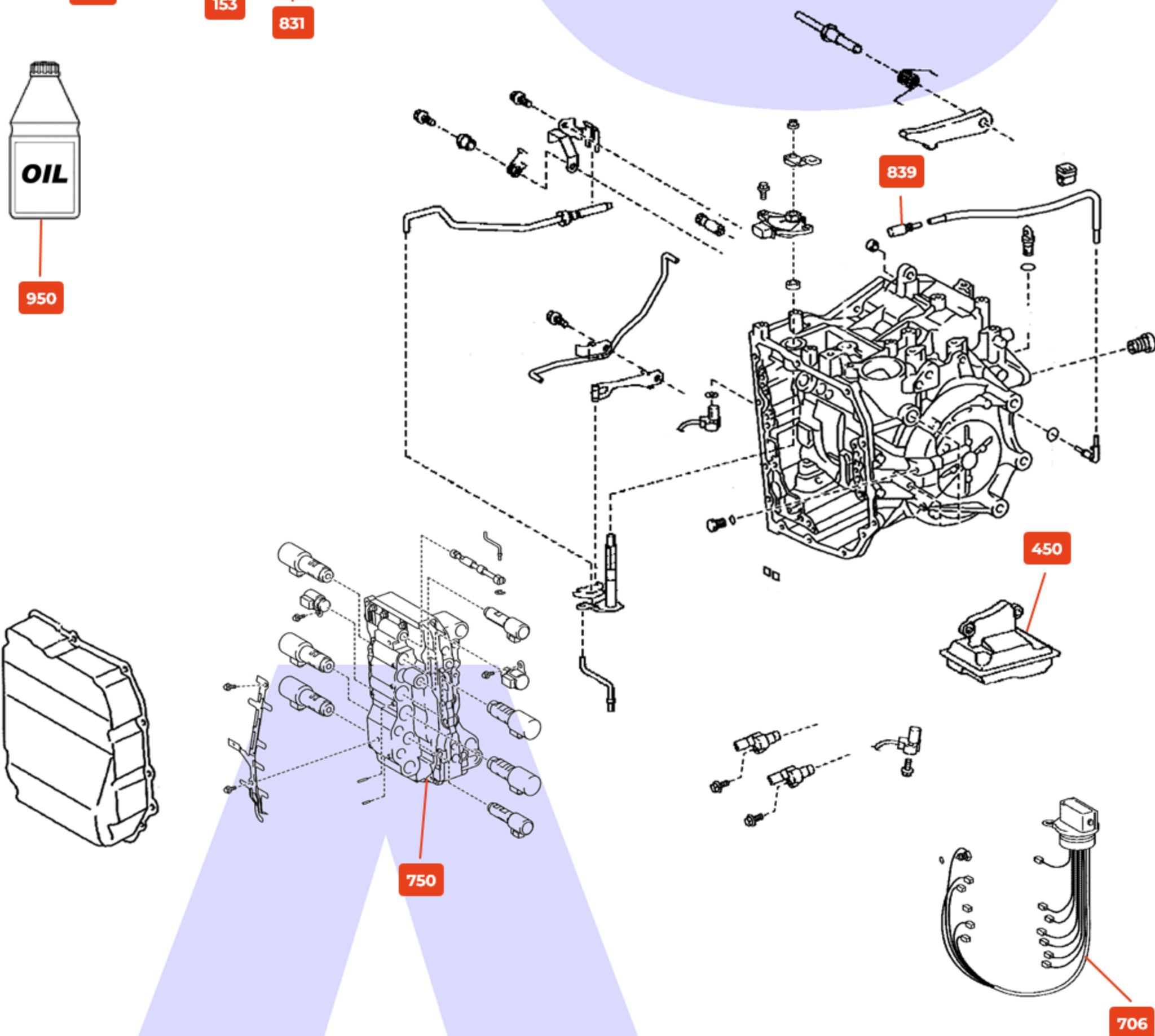
'C2' Clutch

H



Transfer Gear & Differential

J



Main Case, Valve Body Etc.