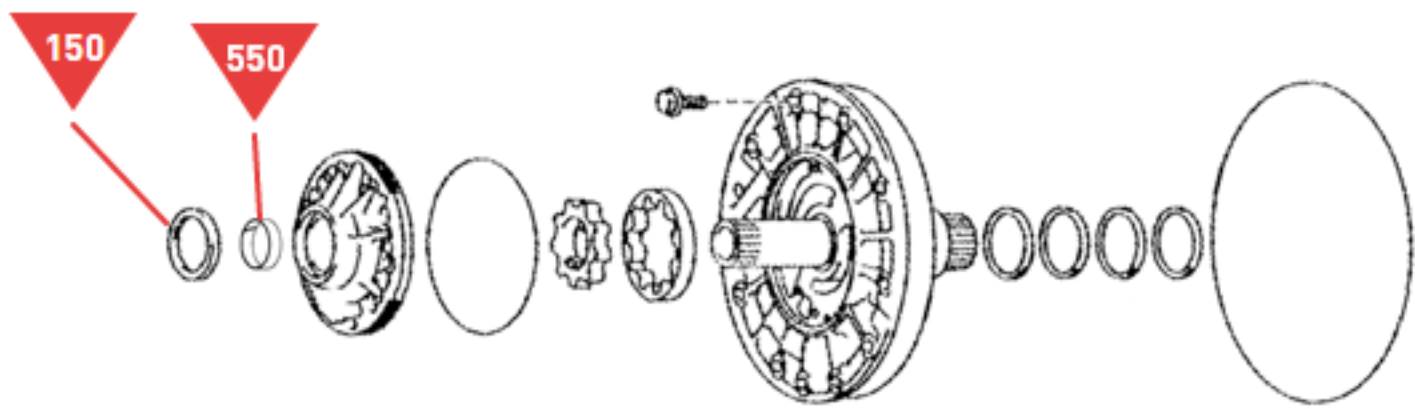
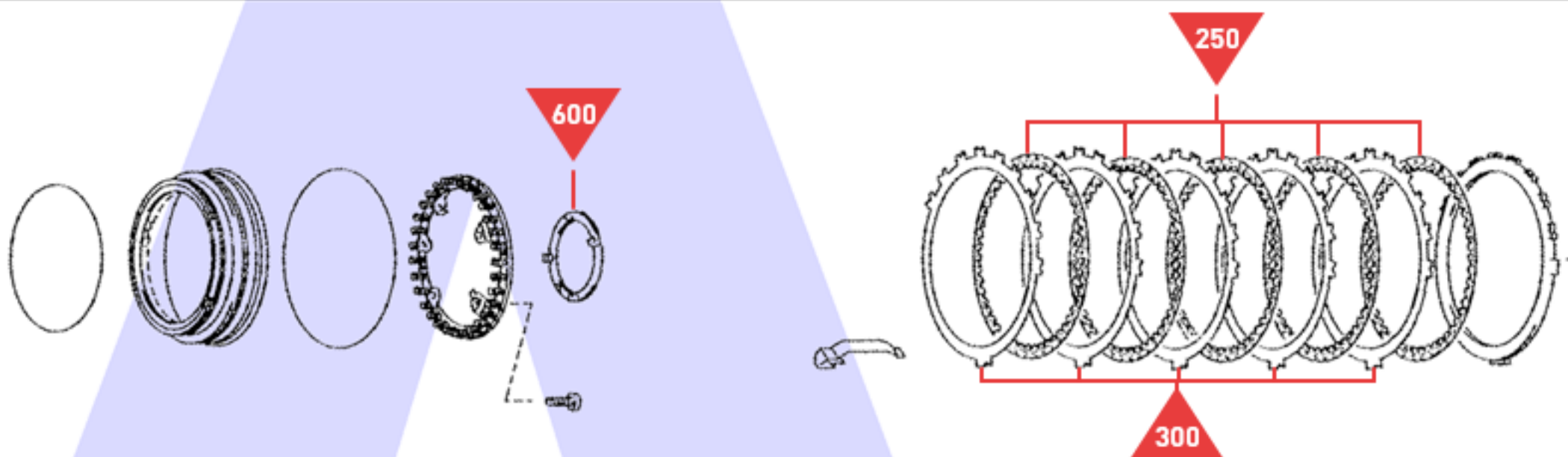


A



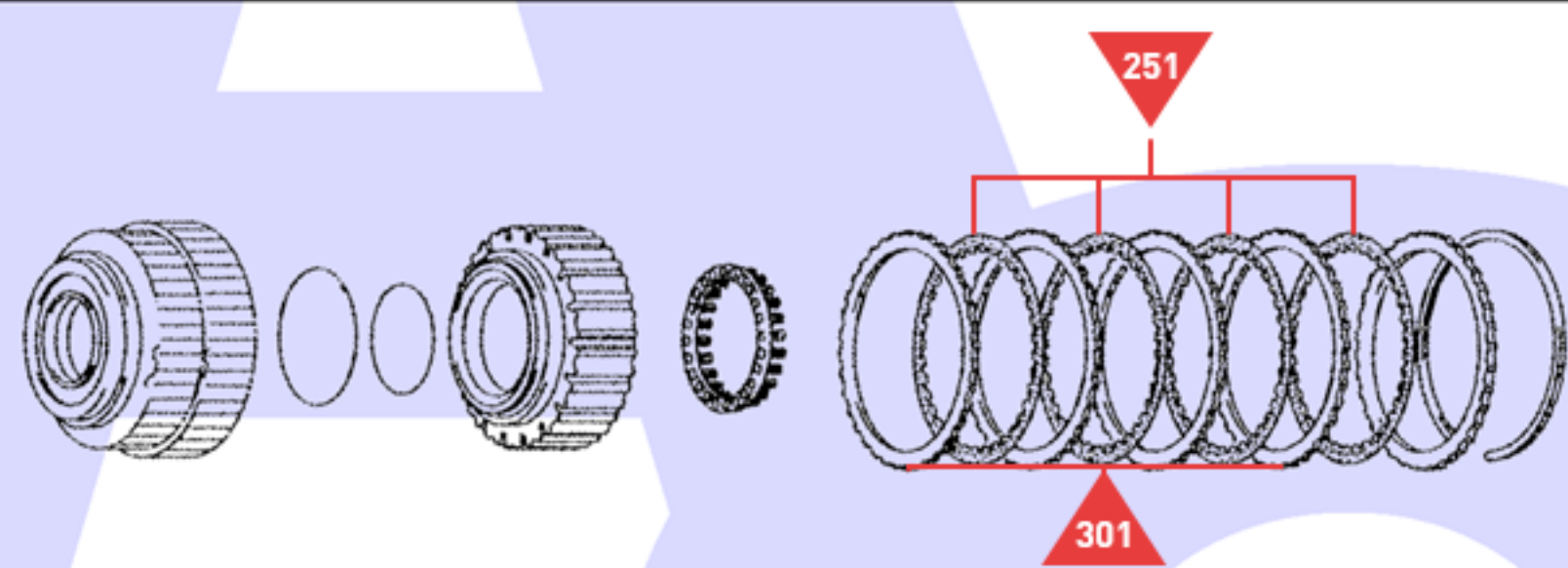
Oil Pump Assy

B



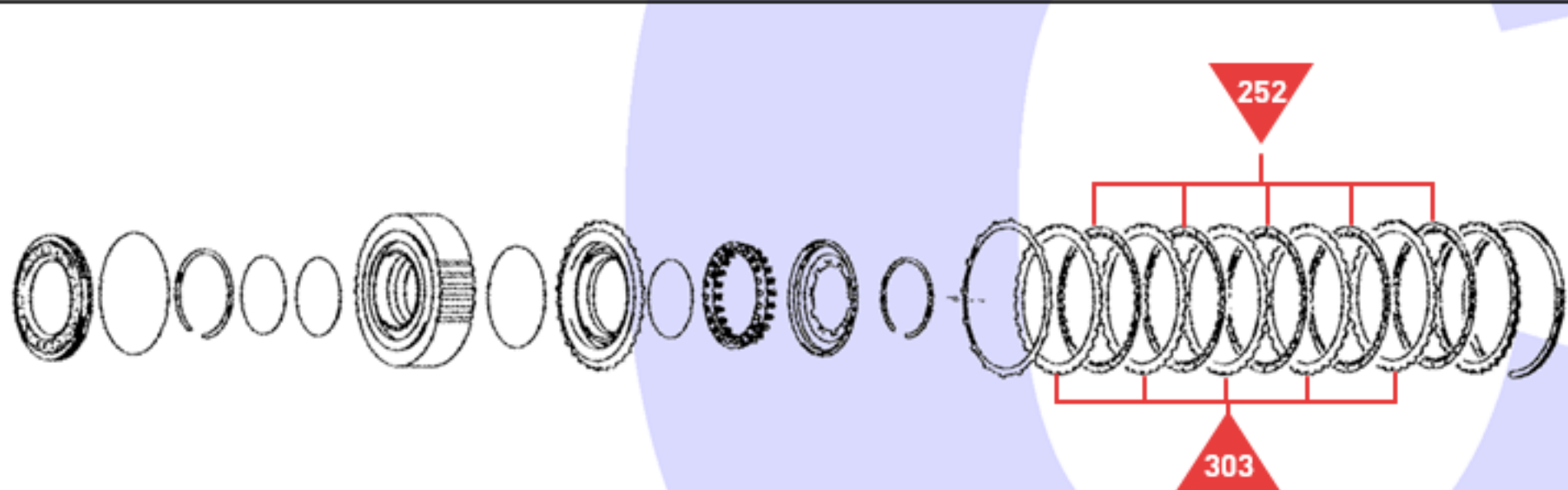
'B1' Brake (2nd & 7th)

C



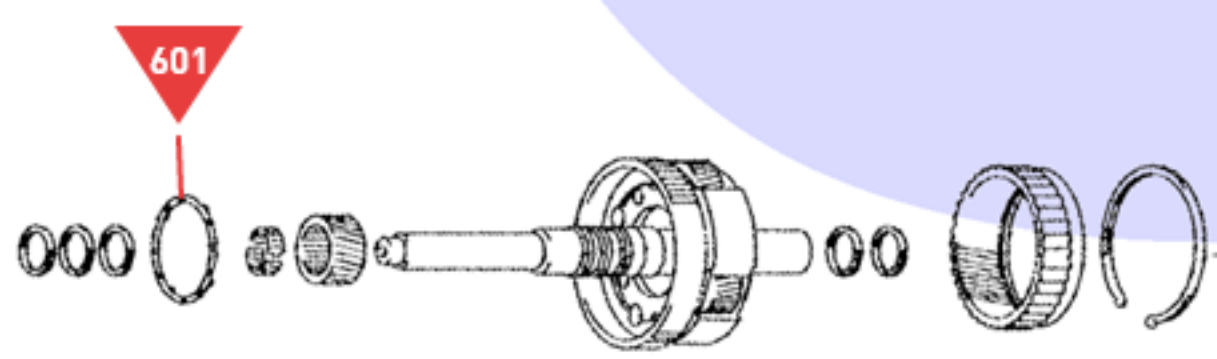
'C3' Clutch (3rd & 7th)

D



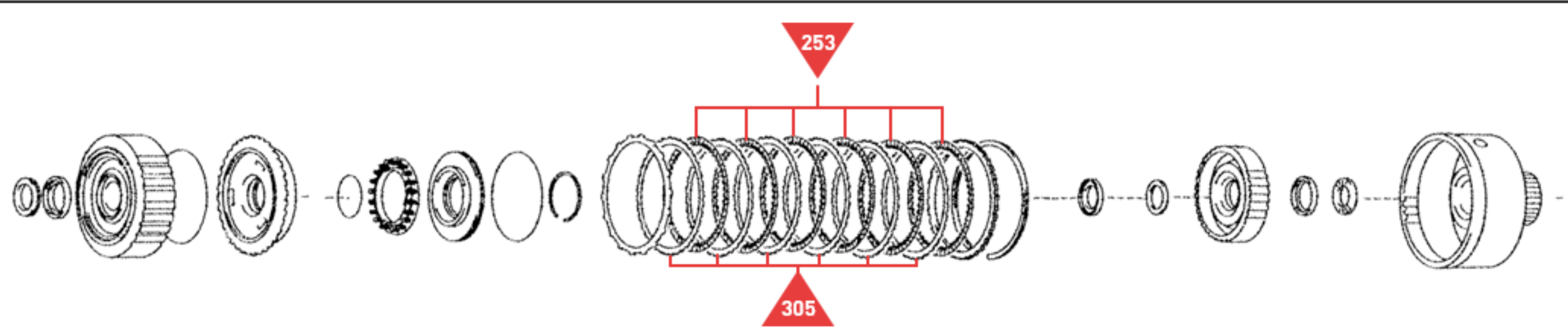
'C4' Clutch (Rev, 4th & 6th)

E



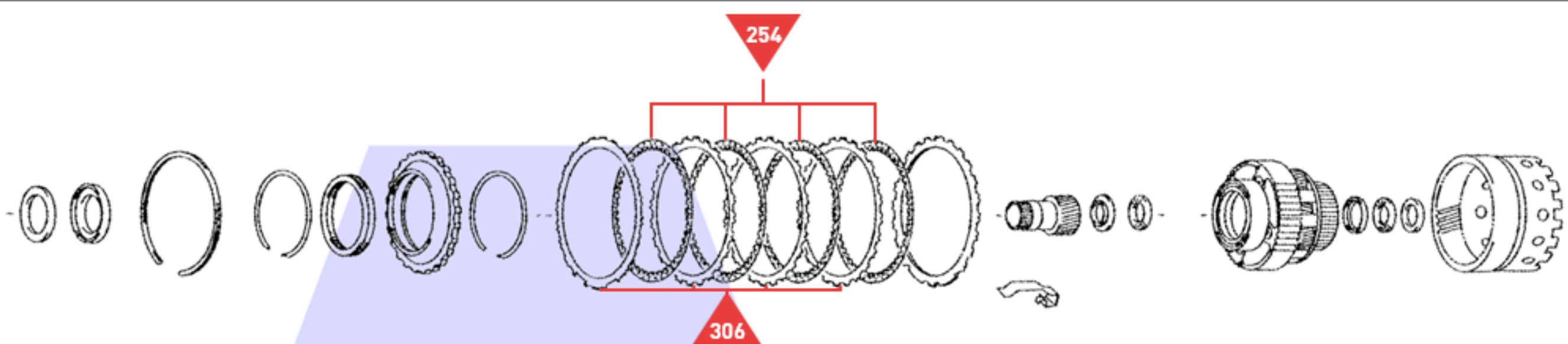
Front Planetary Assembly

F



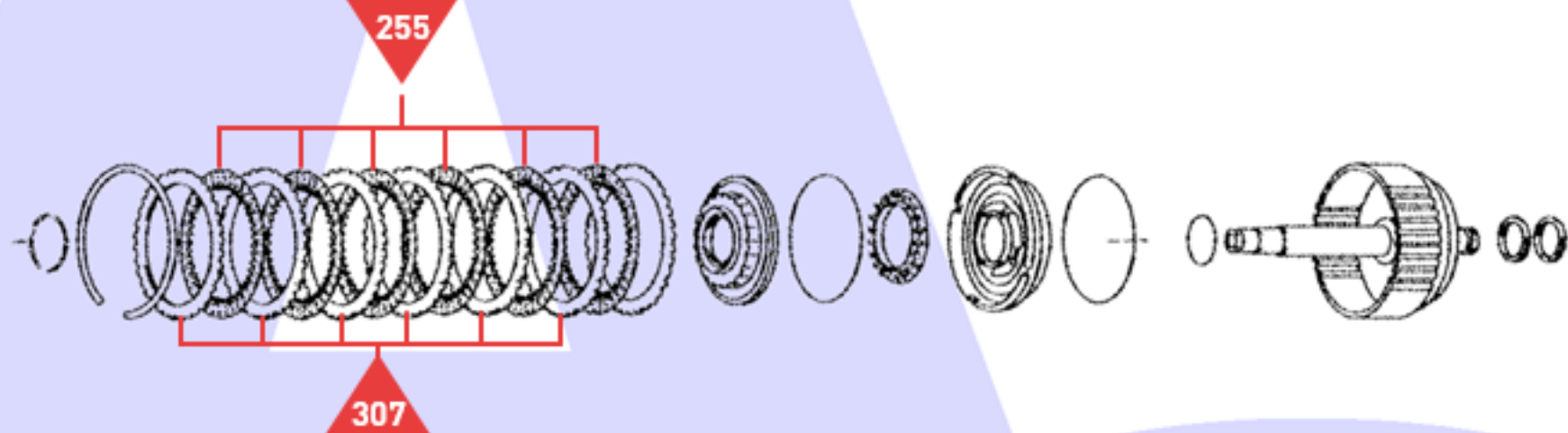
'C1' Clutch (1st, 2nd, 3rd, 4th & 5th)

G



'F1' One Way Clutch, 'B2' Brake (Reverse) & Rear Planetary Assembly

H



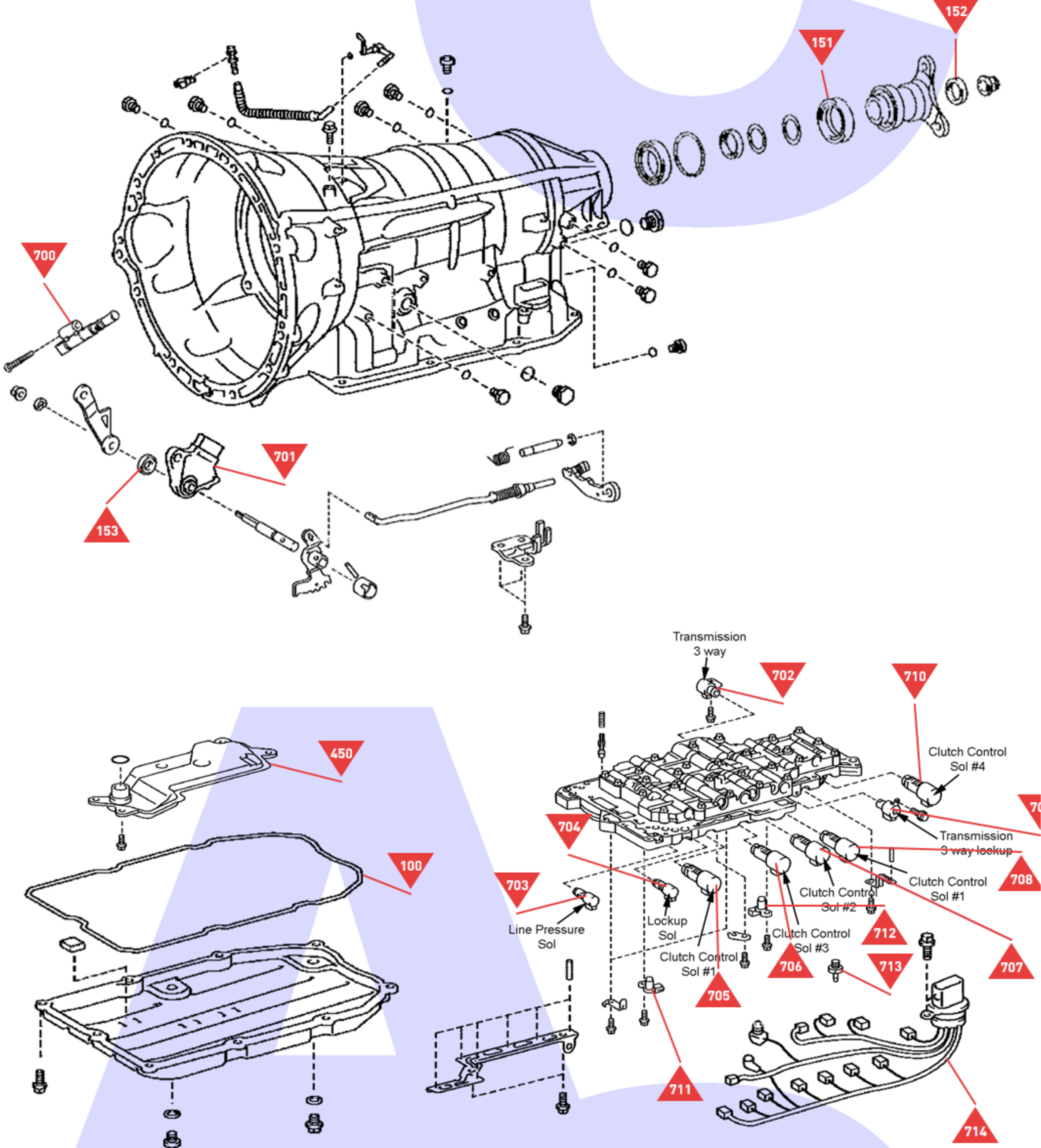
'C2' Clutch (5th, 6th, 7th, & 8th)

J



Output Shaft & 'B2' Brake Piston Assembly

K



Main Casing, Filter, Oil Pan, Valve Body, Sensors & Loom