

Exploded view diagram of a pump assembly. The diagram shows the following components and their callouts:

- 150: A small ring or washer.
- 120: A large, complex housing or cover.
- 550: A small nut or washer.
- 551: A gear or impeller.
- 552: A small nut or washer.
- 800: A large, complex housing or cover, highlighted with a blue background.
- 600: A large, complex housing or cover, highlighted with a red background.
- 554: A small nut or washer.

The diagram is labeled "Pump Assembly" at the bottom.

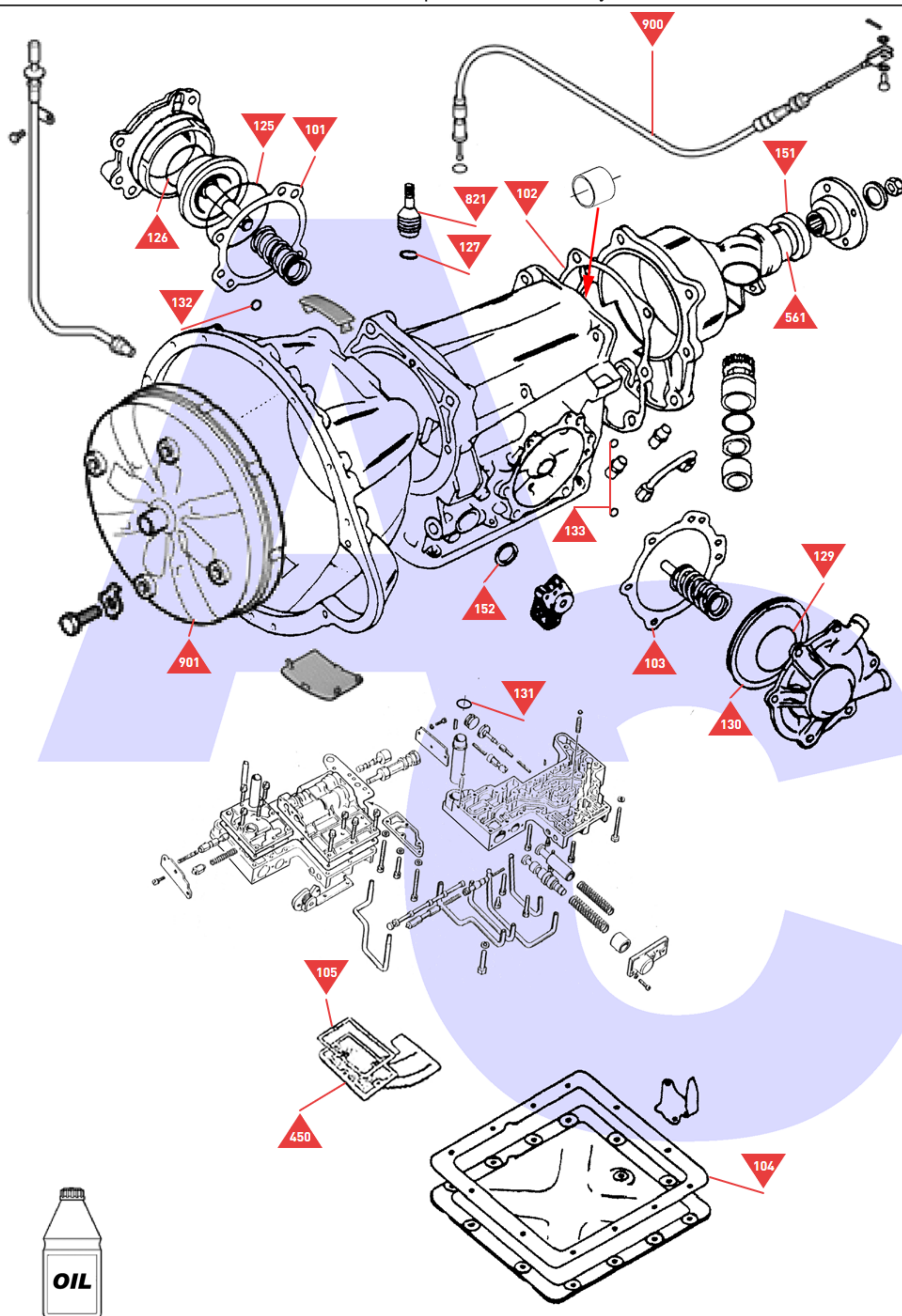
Exploded view diagram of the Forward Clutch Assembly. The diagram shows the following components and their callout numbers:

- 250: Clutch Housing (Top)
- 300: Clutch Housing (Bottom)
- 601: Clutch Release Pin
- 805: Clutch Release Bearing
- 410: Clutch Release Fork
- 121: Clutch Release Fork Pin
- 806: Clutch Release Fork Spring
- 807: Clutch Release Fork Spring Pin
- 122: Clutch Release Fork Spring Pin
- 602: Clutch Release Pin
- 603: Clutch Release Pin

Diagram illustrating the components of a Direct Clutch Assembly, numbered 500 through 555. The assembly includes a pressure plate (500), a flywheel (555), a clutch disc (501), a release bearing (502), a release fork (503), a release arm (504), a pressure plate spring (505), a pressure plate bolt (506), a pressure plate nut (507), a pressure plate washer (508), a pressure plate shim (509), a pressure plate bush (510), a pressure plate pin (511), a pressure plate clip (512), a pressure plate screw (513), a pressure plate pin (514), a pressure plate clip (515), a pressure plate screw (516), a pressure plate pin (517), a pressure plate clip (518), a pressure plate screw (519), a pressure plate pin (520), a pressure plate clip (521), a pressure plate screw (522), a pressure plate pin (523), a pressure plate clip (524), a pressure plate screw (525), a pressure plate pin (526), a pressure plate clip (527), a pressure plate screw (528), a pressure plate pin (529), a pressure plate clip (530), a pressure plate screw (531), a pressure plate pin (532), a pressure plate clip (533), a pressure plate screw (534), a pressure plate pin (535), a pressure plate clip (536), a pressure plate screw (537), a pressure plate pin (538), a pressure plate clip (539), a pressure plate screw (540), a pressure plate pin (541), a pressure plate clip (542), a pressure plate screw (543), a pressure plate pin (544), a pressure plate clip (545), a pressure plate screw (546), a pressure plate pin (547), a pressure plate clip (548), a pressure plate screw (549), a pressure plate pin (550), a pressure plate clip (551), a pressure plate screw (552), a pressure plate pin (553), a pressure plate clip (554), a pressure plate screw (555).

Diagram illustrating the exploded view of a Planetary Assembly. The components are labeled with callouts:

- 200: Input shaft
- 201: Input shaft nut
- 202: Input shaft seal
- 651: Input shaft seal
- 652: Planetary gear
- 812: Planetary carrier
- 653: Planetary gear
- 501: Output shaft
- 557: Output shaft nut

[illegible]

Main Case & Servo's