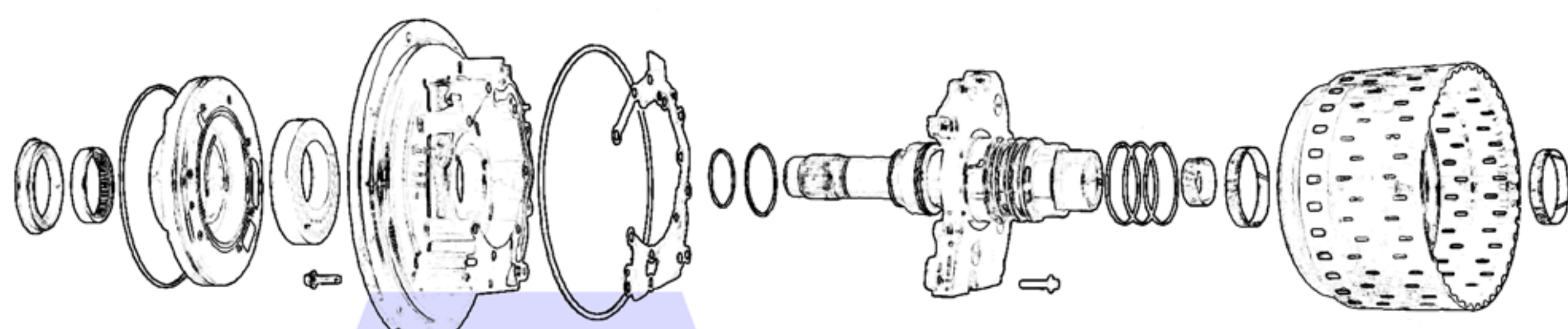
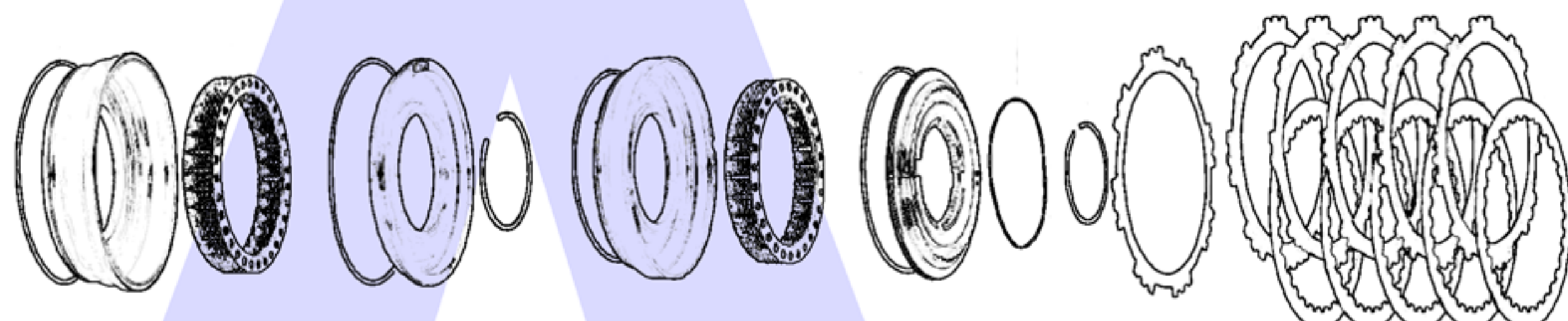


A



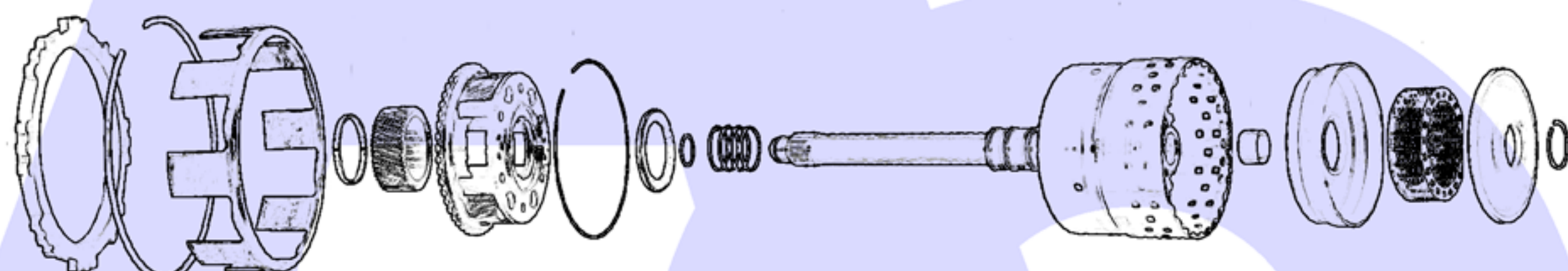
Oil Pump and Forward.Direct Drum

B

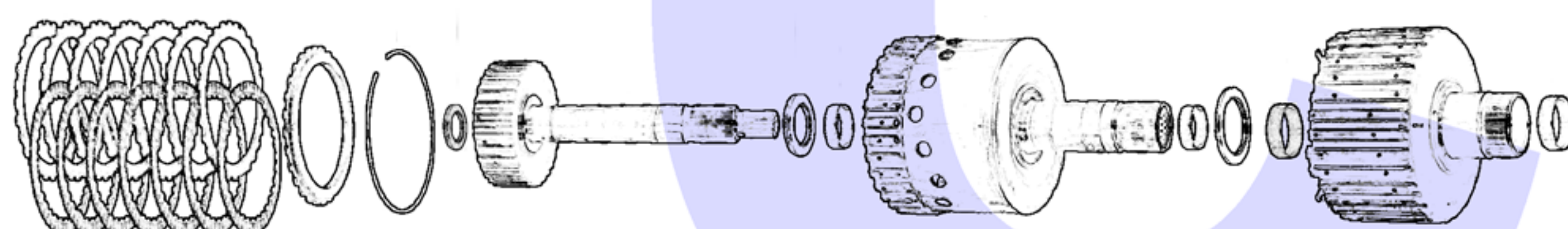


Direct Piston, Forward Piston & Forward Clutches

C

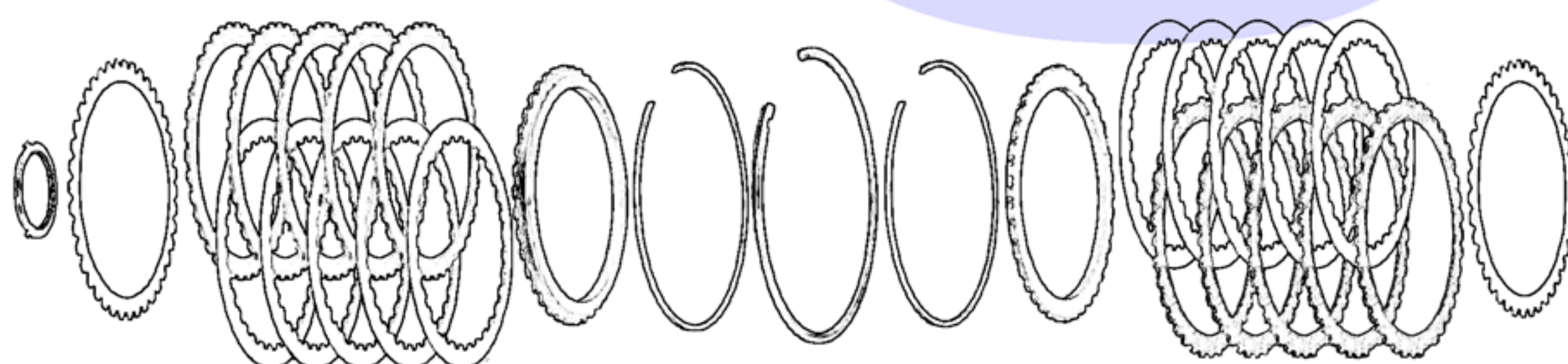


Direct Clutch Apply Ring, Forward Planetary & Overdrive Drum

 \overline{D} 

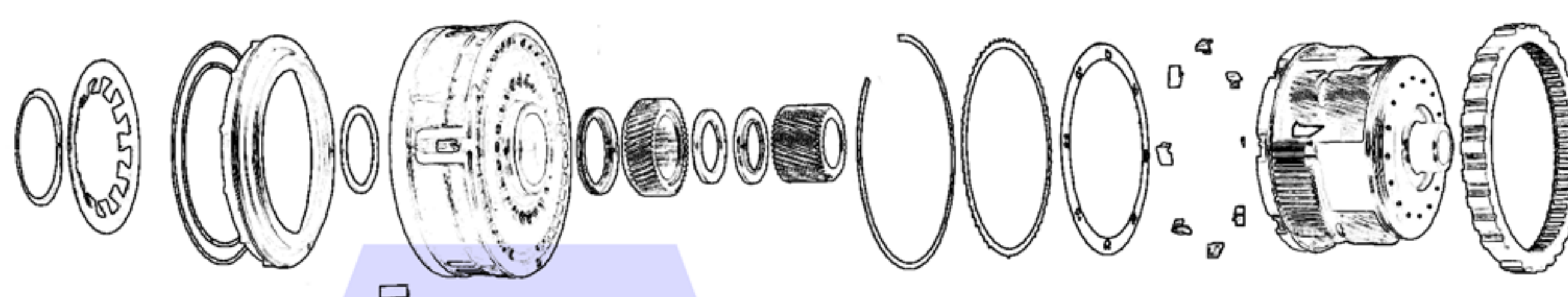
Overdrive Clutch, Overdrive Hub, Forward Hub & Direct Hub

E



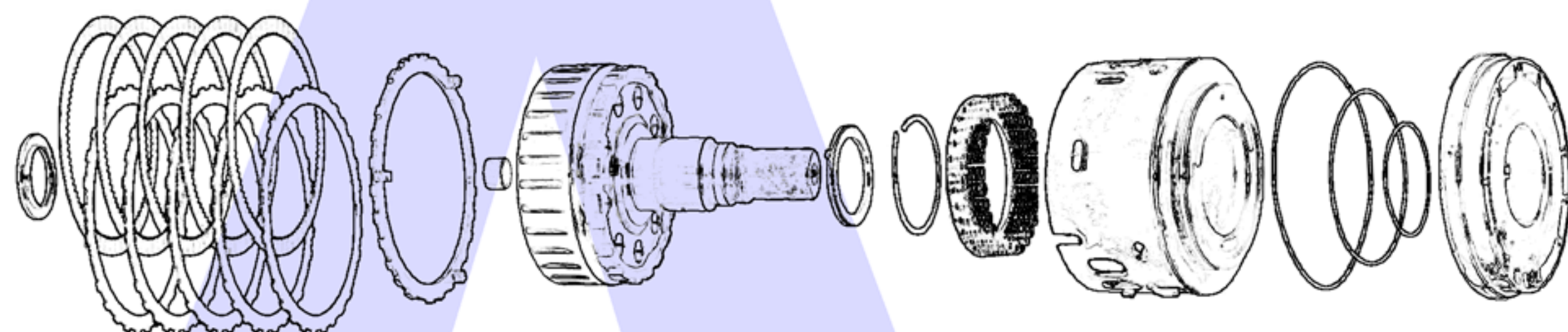
Direct Clutch & intermediate Clutch

F

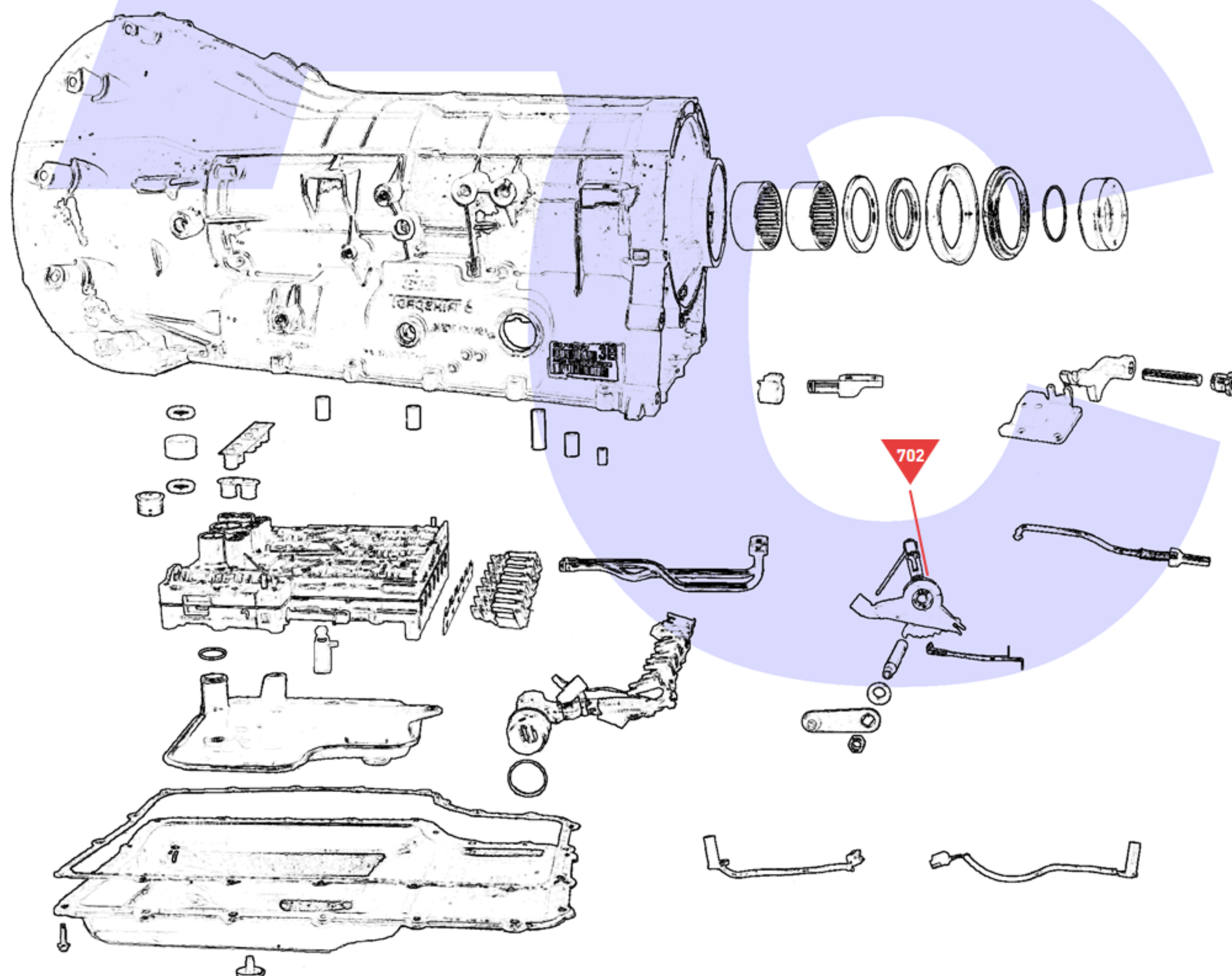


Intermediate Housing, Reaction Sun Gear, Low Sprag & Rear Planetary

G



Low/Reverse Clutch, Output Shaft, Low/Reverse Piston & Low/Reverse Housing

 \overline{H} 

Main Case, Valve Body, Filter, & Oil Pan Etc.