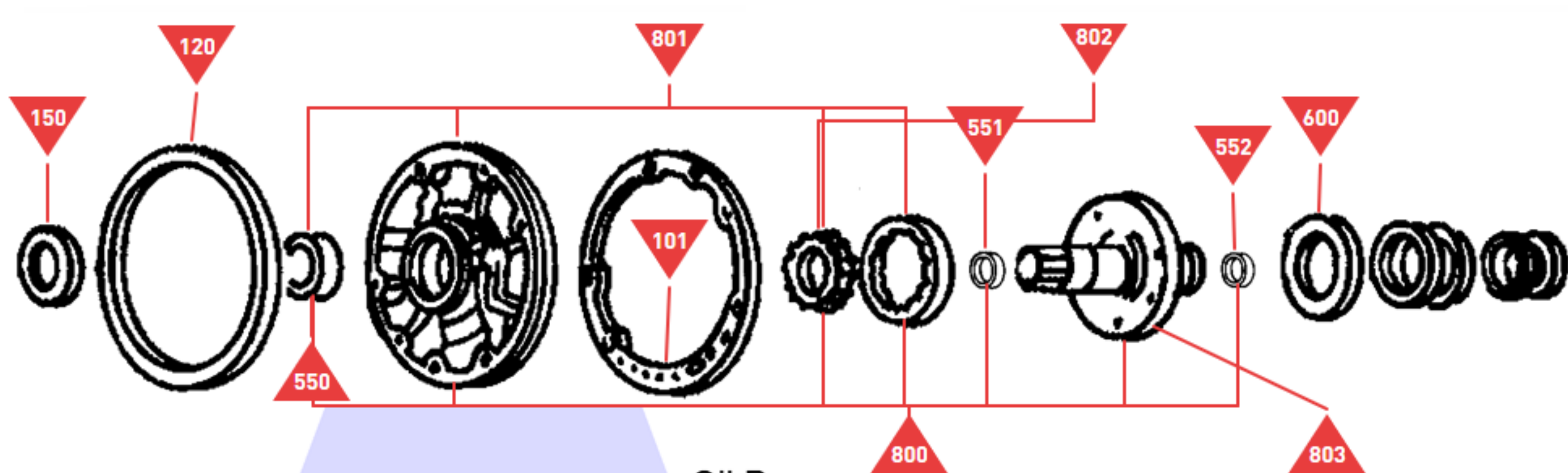
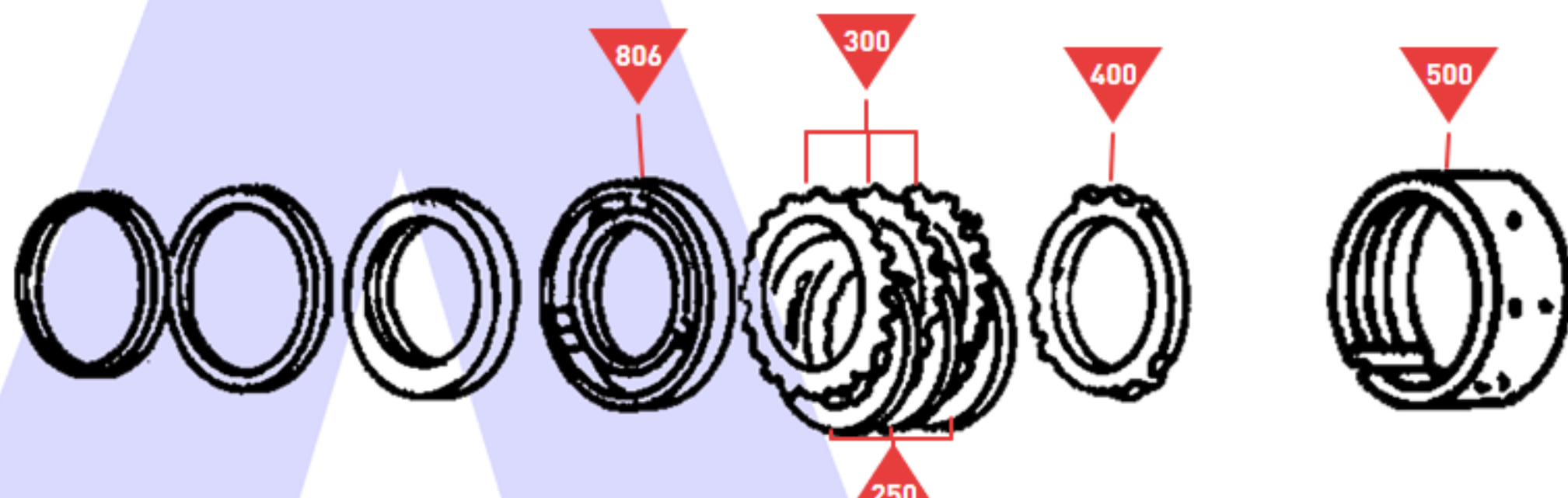


A



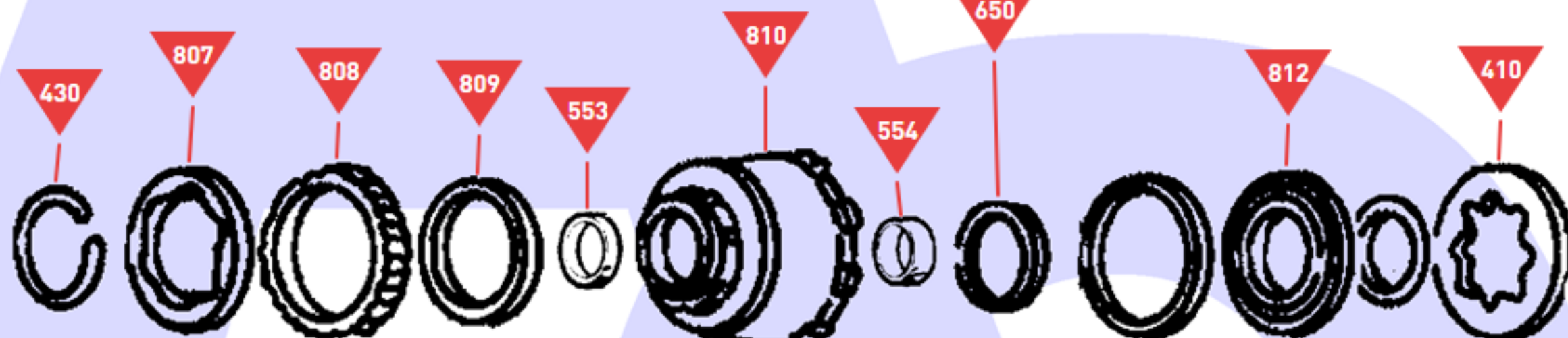
Oil Pump

B



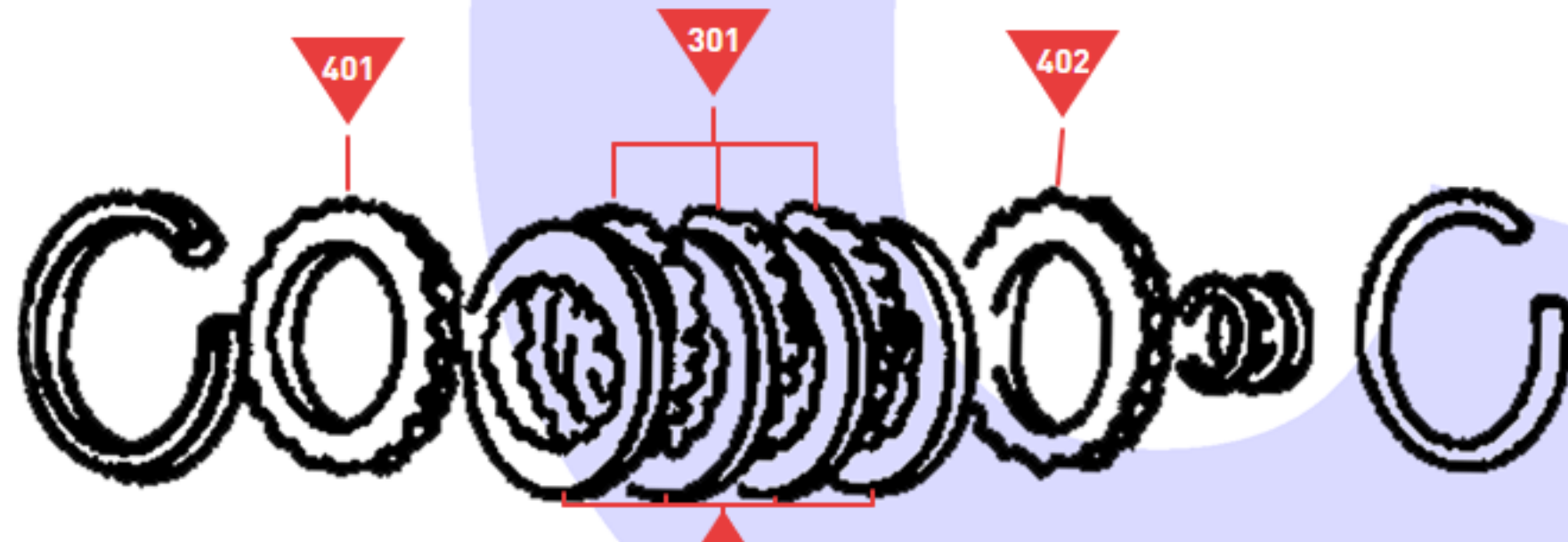
Intermediate Clutch & Overdrive Band

C



Reverse Clutch Drum

D



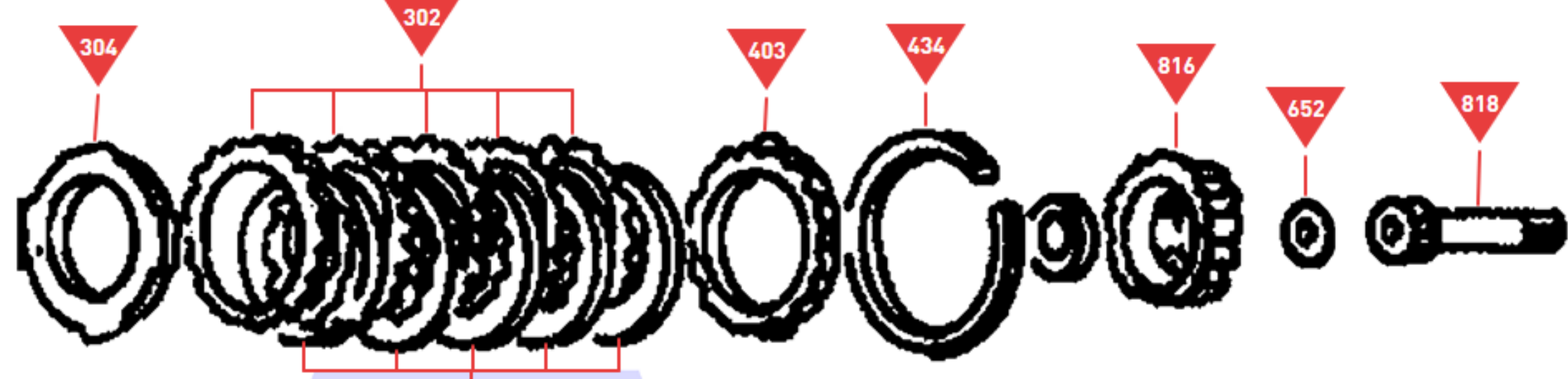
Reverse Clutch

E



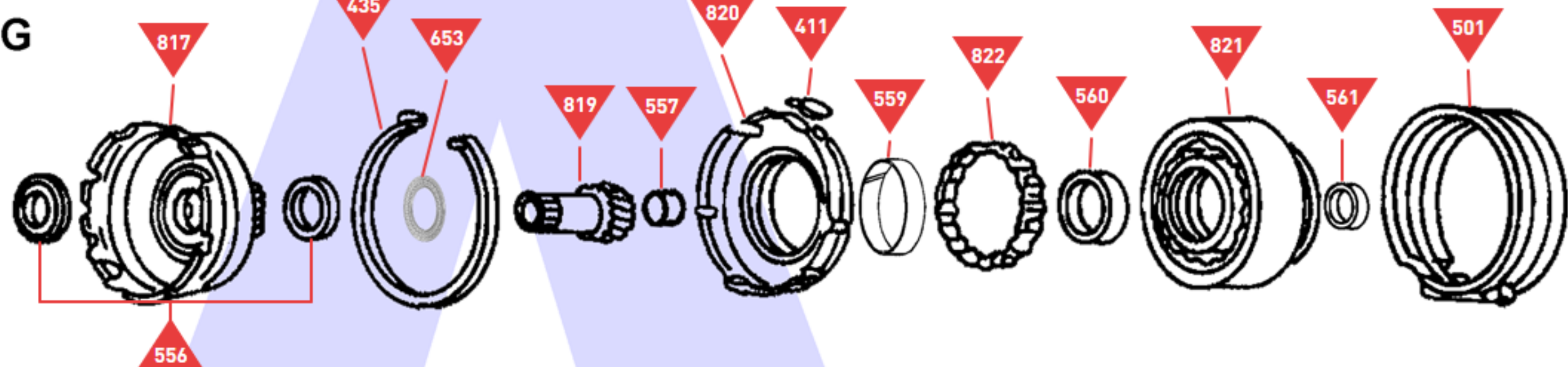
Forward Clutch Drum

F



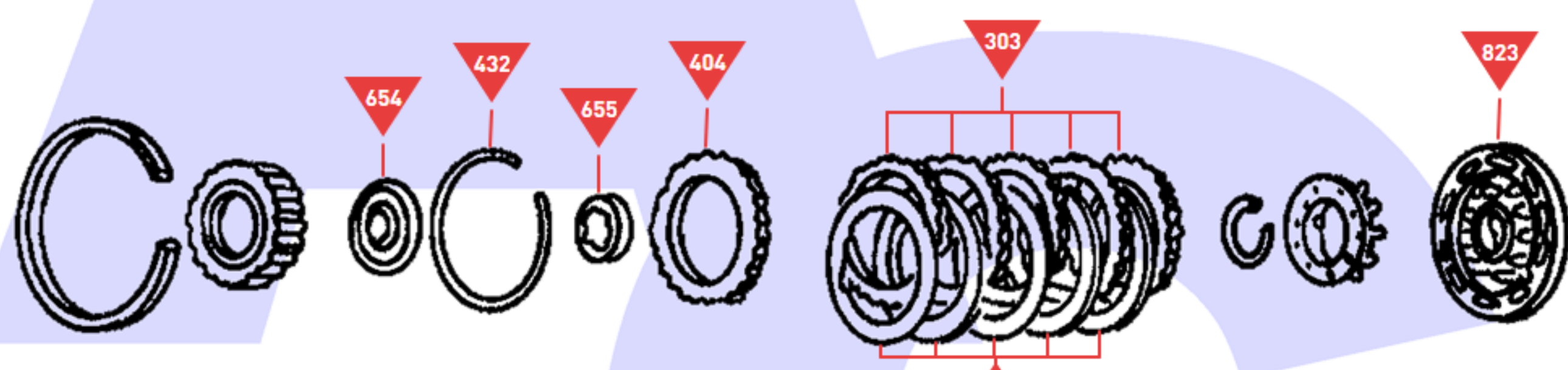
Forward Clutch

G



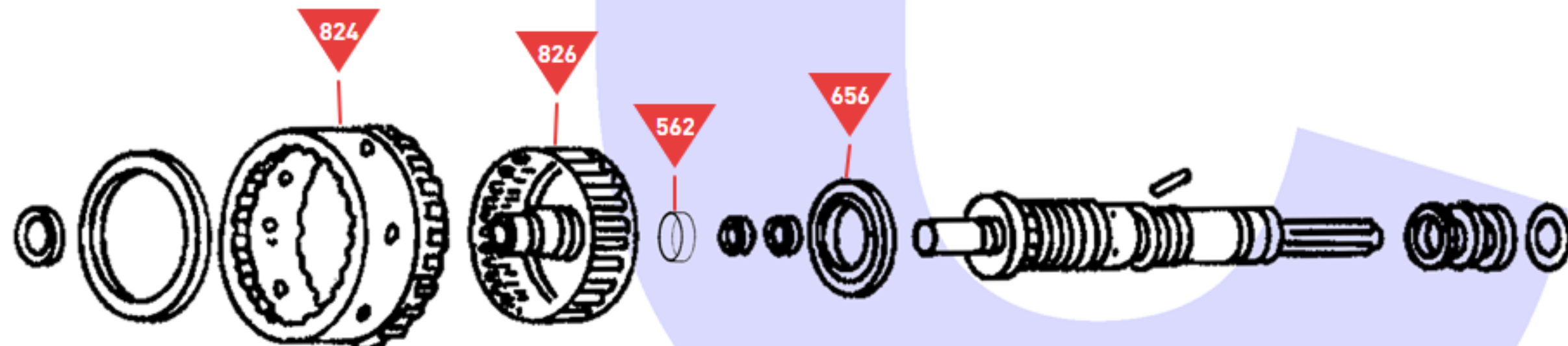
Planetary Set, Centre Support & Reverse Band

H



Direct Clutch

J



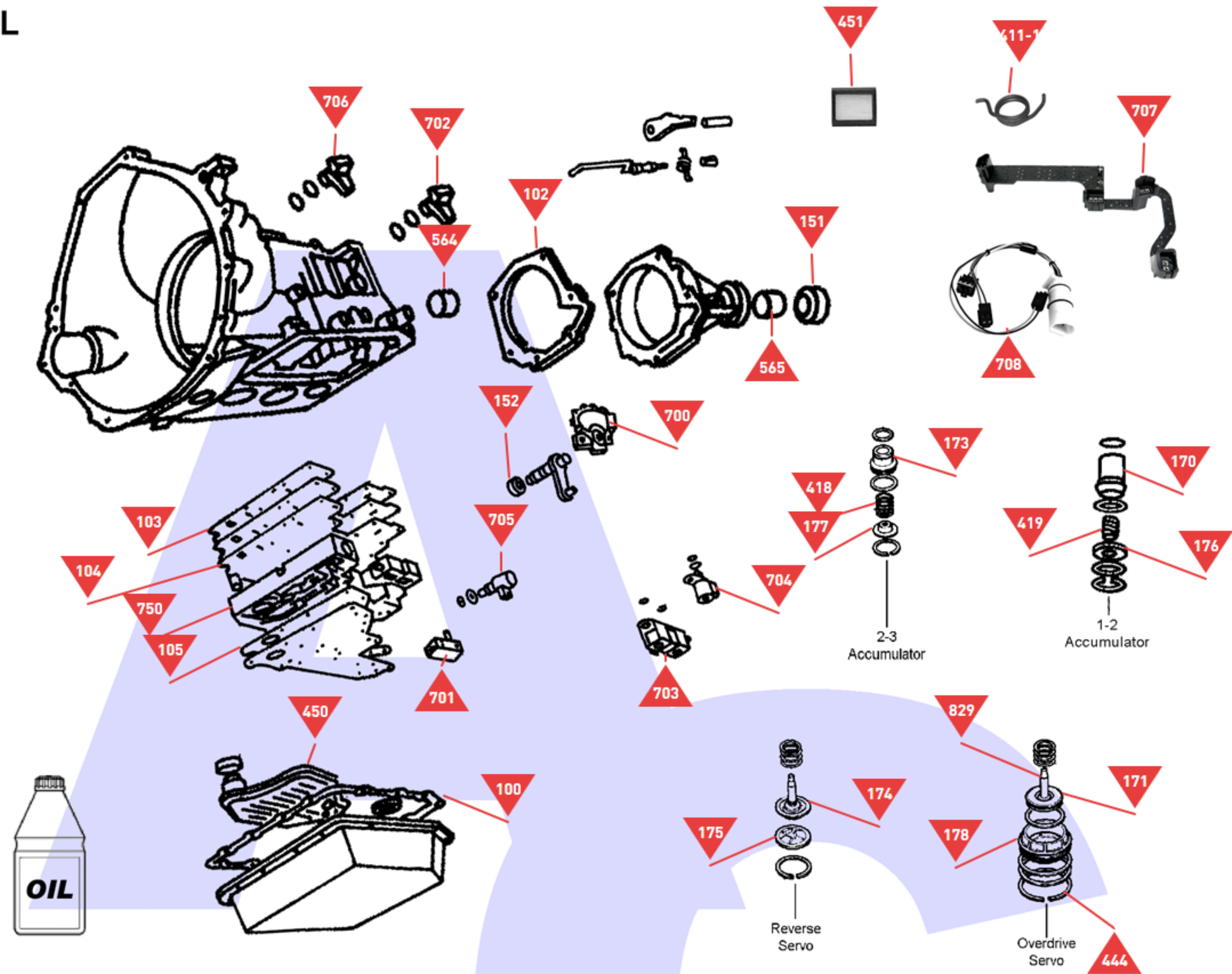
Output Shaft Ring Gear, Direct Clutch Drum & Output Shaft

K



Hub Output Shaft Ring Gear

L



Casings, Valve Body, Oil Pan, Servo's & Accumulators Etc.e