

# AX4N, 4F50N

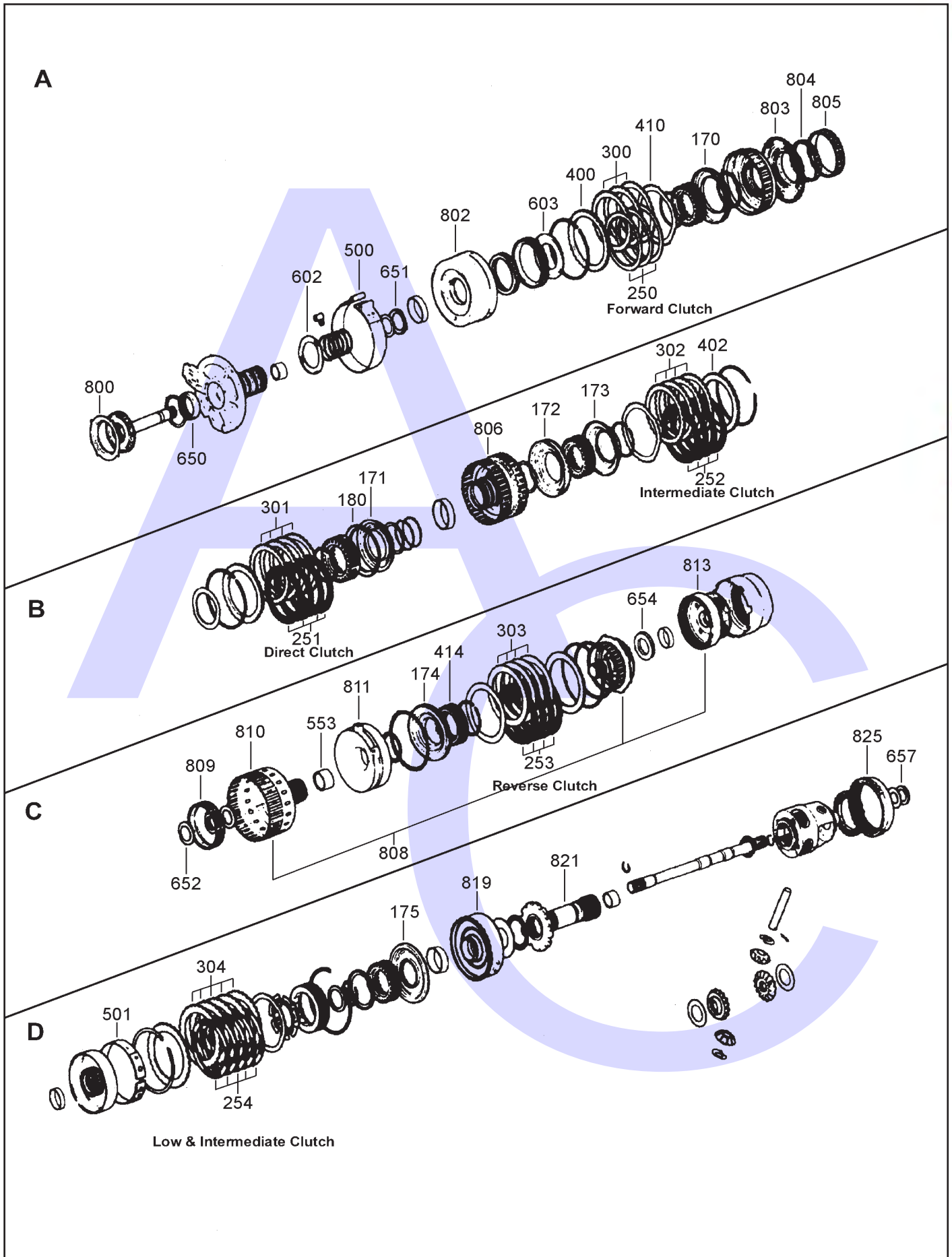
## 4 SPEED FWD (Electronic Control)



AUTOMATIC CHOICE



THE AUTOMATIC TRANSMISSION PARTS WAREHOUSE



# AX4N, 4F50N

## 4 SPEED FWD (Electronic Control)

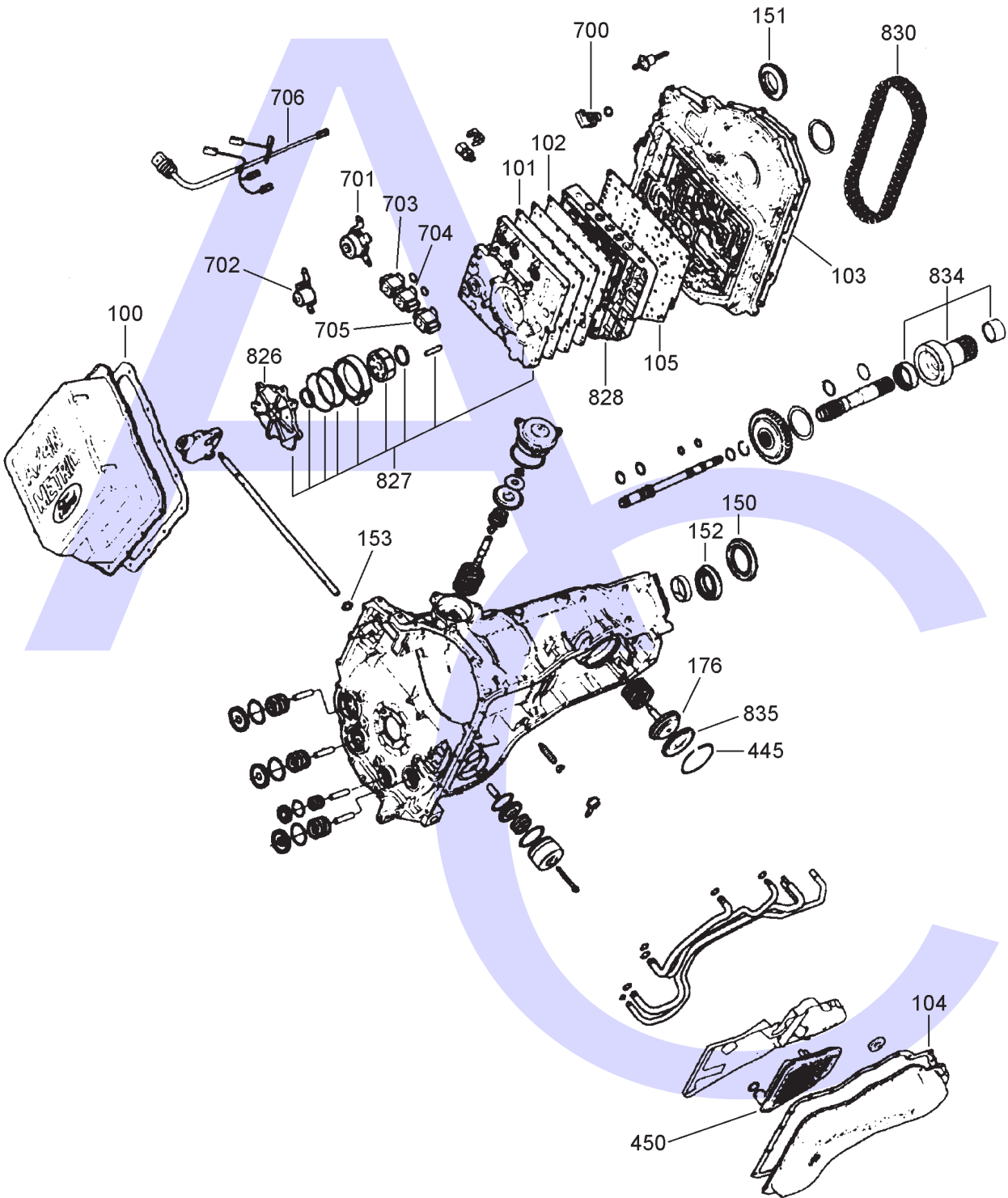


AUTOMATIC CHOICE



THE AUTOMATIC TRANSMISSION PARTS WAREHOUSE

E



# AX4N, 4F50N

## 4 SPEED FWD (Electronic Control)



AUTOMATIC CHOICE



THE AUTOMATIC TRANSMISSION PARTS WAREHOUSE

ILL NO.	DESCRIPTION	YEARS	QTY	PART NO
<b>KITS</b>				
Kit	Overhaul Kit With Pistons .....	95-99	1	<b>AX4N.OHK01</b>
Kit	Overhaul Kit Without Pistons ....	00-ON	1	<b>AX4N.OHK02</b>
Kit	Overhaul Kit With Pistons .....	00-ON	1	<b>AX4N.OHK03</b>
<b>GASKETS</b>				
100E	Side Pan (Steel Cover) .....	95-99	1	<b>AX4N.GAS01</b>
100E	Side Pan (Steel Cover) .....	00-03	1	<b>AX4N.GAS13</b>
100E	Side Pan (Aluminium Cover).....	00-ON	1	<b>AX4N.GAS14</b>
101E	Pump Plate to Valve Body .....	95-97	1	<b>AX4N.GAS06</b>
102E	Pump to Separator Plate.....	95-97	1	<b>AX4N.GAS07</b>
102E	Pump to Separator Plate.....	98-ON	1	<b>AX4N.GAS08</b>
103E	Chain Cover/Case Cover.....	95-ON	1	<b>AX4N.GAS09</b>
104E	Pan Gasket (Cork & Rubber)....	1995	1	<b>AX4N.GAS11</b>
104E	Pan Gasket (Bonded Rubber)...	96-ON	1	<b>AX4N.GAS12</b>
105E	Valve Body Plate (Bonded Rubber) (Taurus/Sable No I.D.) .....	1995	1	<b>AX4N.SP01</b>
105E	Valve Body Plate (Bonded Rubber) (Continental I.D. 11) .....	95-96	1	<b>AX4N.SP02</b>
105E	Valve Body Plate (Bonded Rubber) (Taurus/Sable I.D. 13) .....	1996	1	<b>AX4N.SP03</b>
105E	Valve Body Plate (Bonded Rubber) (Taurus/SHO I.D. 15) .....	1996	1	<b>AX4N.SP05</b>
105E	Valve Body Plate (Bonded Rubber) (Taurus/Sable I.D. 14) .....	1996	1	<b>AX4N.SP04</b>
NI	Valve Body to Sep Plate (Replacement for Bonded).....	95-97	1	<b>AX4N.GAS02</b>
NI	Valve Body to Sep Plate (Replacement for Bonded).....	98-ON	1	<b>AX4N.GAS03</b>
NI	Valve Body Plate to Case Cover (Replacement for Bonded).....	95-97	1	<b>AX4N.GAS04</b>
NI	Valve Body Plate to Case Cover (Replacement for Bonded).....	98-ON	1	<b>AX4N.GAS05</b>
<b>RUBBER COMPONENTS</b>				
<b>METAL CLAD SEALS</b>				
150E	Converter Hub.....	95-ON	1	<b>AXOD.MCS01</b>
151E	Axle Seal (L/Hand).....	95-ON	1	<b>AXOD.MCS02</b>
152E	Axle Seal (R/Hand) .....	95-ON	1	<b>AXOD.MCS02</b>
153E	Manual Shaft Seal.....	95-ON	1	<b>AXOD.MCS03</b>
<b>MOULDED PISTONS</b>				
170A	Forward Clutch (Moulded) .....	94-97	1	<b>AXODE.PIS02</b>
170A	Forward Clutch (Tall).....	98-ON	1	<b>AXODE.PIS07</b>
171B	Direct Clutch (Moulded) .....	95-ON	1	<b>AXODE.PIS01</b>
172B	Intermediate Clutch.....	95-ON	1	<b>AXODE.PIS03</b>
173B	Intermediate Balance Piston.....	95-ON	1	<b>AXODE.PIS09</b>
174C	Reverse Clutch .....	95-ON	1	<b>AXOD.PIS07</b>
175D	Low & Intermediate .....	95-ON	1	<b>AXODE.PIS04</b>
176E	Coast Servo Piston .....	95-ON	1	<b>AXODE.PIS08</b>
177E	Overdrive Servo Moulded (57.80mm OD x 12.70mm ID ....	95-97	1	<b>AXOD.PIS06</b>
177E	Overdrive Servo Moulded (57.80mm OD x 9.78mm ID .....	98-ON	1	<b>AXODE.PIS06</b>
180B	Apply Ring for Moulded Dir Piston (All Metal).....	95-ON	1	<b>AXODE.RET01</b>

ILL NO.	DESCRIPTION	YEARS	QTY	PART NO
<b>SHAFT SEALING RINGS</b>				
Kit	Sealing Ring Kit Teflon (With 1 Metal Turb Shaft Ring)..	95-ON	1	<b>AXOD.SRK01</b>
<b>FRICITION PLATES</b>				
Kit	Friction Plate Kit (Aftermarket)..	95-ON	1	<b>AX4N.FRK01</b>
Kit	Friction Plate Kit (Alto) .....	95-ON	1	<b>AX4N.FRK51</b>
250A	Forward Clutch (146mm OD x 1.65mm x 57T) ..	95-ON	4	<b>AXOD.FRP02</b>
251B	Direct Clutch (146mm OD x 1.65mm x 63T) ..	95-ON	4	<b>AXOD.FRP03</b>
251B	Direct Clutch High Energy (146mm OD x 1.65mm x 63T) ..	95-ON	4	<b>AXOD.FRP04</b>
252B	Intermediate Clutch (146mm OD x 1.65mm x 63T) ..	95-ON	5	<b>AXOD.FRP03</b>
252B	Intermediate Clutch High Energy (146mm OD x 1.65mm x 63T) ..	95-ON	5	<b>AXOD.FRP04</b>
253C	Reverse Clutch (151.90mm OD x 1.70mm x 49T)	86-ON	4	<b>AXOD.FRP05</b>
254D	Low & Intermediate (151mm OD x 1.65mm x 57T) ..	95-ON	5	<b>AX4N.FRP01</b>
<b>STEEL PLATES</b>				
Kit	Steel Plate Kit (Aftermarket) .....	95-ON	1	<b>AX4N.STK01</b>
Kit	Steel Plate Kit (Alto) (AX4N, 4F50N) .....	95-99	1	<b>AX4N.STK51</b>
Kit	Steel Plate Kit (Alto) (AX4N Taurus SHO).....	96-98	1	<b>AX4N.STK52</b>
Kit	Steel Plate Kit (Alto) (AX4N Lincoln).....	98-ON	1	<b>AX4N.STK53</b>
Kit	Steel Plate Kit (Alto) (AX4N SHO) .....	99-ON	1	<b>AX4N.STK53</b>
300A	Forward Clutch (125.35mm ID x 1.78mm x 34T) .	95-ON	4	<b>AXOD.STP02</b>
301B	Direct Clutch (119.38mm ID x 1.78mm x 34T) .	95-ON	4	<b>AXOD.STP01</b>
301B	Direct Clutch (Kolene) (119.38mm ID x 1.78mm x 34T) .	95-ON	4	<b>AX4N.STP03</b>
302B	Intermediate Clutch (119.38mm ID x 1.78mm x 34T) .	95-ON	5	<b>AX4N.STP01</b>
302B	Intermediate Clutch (Kolene) (119.38mm ID x 1.78mm x 34T) .	95-ON	5	<b>AX4N.STP03</b>
303C	Reverse Clutch (121.90mm ID x 1.73mm x 54T) .	95-ON	4	<b>AXOD.STP04</b>
304D	Low & Intermediate (124mm ID x 1.78mm x 32T) ....	95-ON	5	<b>AX4N.STP02</b>
<b>PRESSURE PLATES</b>				
400A	Forward Clutch (34T) .....	95-ON	1	<b>AXOD.PP05</b>
402B	Intermediate Clutch (3.18mm Stepped x 34T) .....	95-ON	1	<b>AXOD.PP03</b>
<b>SPRINGS &amp; CIRCLIPS</b>				
410A	Wave Plate - Forward Clutch (120mm ID x 2.03mm x 21T) ....	95-ON	1	<b>AXOD.DIA03</b>
414C	Return Spring Assy (Reverse Clutch).....	95-ON	1	<b>AXOD.SPR01</b>
445E	Circlip, Coast Servo .....	95-ON	1	<b>AX4N.CIR01</b>
<b>FILTERS</b>				
450E	Filter Deep Pan (Long Orange Seal) .....	1995	1	<b>AXODE.FIL02</b>
450E	Filter (Green Multi Lip Seal).....	96-ON	1	<b>AXODE.FIL03</b>

# AX4N, 4F50N

## 4 SPEED FWD (Electronic Control)



AUTOMATIC CHOICE



THE AUTOMATIC TRANSMISSION PARTS WAREHOUSE

ILL NO.	DESCRIPTION	YEARS	QTY	PART NO
<b>BANDS</b>				
500A	Overdrive Band.....	95-ON	1	AXOD.BAN01
501D	Low Intermediate Coast (Alto) .....	95-ON	1	AX4N.BAN01
501D	Low Intermediate Coast.....	95-ON	1	AX4N.BAN02
<b>BUSHINGS</b>				
Kit	Bushing Kit.....	95-ON	1	AX4N.BK01
NI	Sleeve - Valve Body/Pump Shaft Replacement (Sonnax) .....	95-ON	1	AX4N.BUS02
553C	Sun Gear & Shell .....	94-ON	1	AXOD.BUS03
<b>THRUST WASHERS &amp; BEARINGS</b>				
602A	Thrust Washer - Driven Sprocket Support to Band Drum (66.29mm ID x 2.24mm 1 Tab) .	95-ON	AR	AXOD.THW04
602A	Thrust Washer - Driven Sprocket Support to Band Drum (66.29mm ID x 2.49mm 1 Tab) .	95-ON	AR	AXOD.THW05
602A	Thrust Washer - Driven Sprocket Support to Band Drum (66.29mm ID x 2.72mm 1 Tab) .	95-ON	AR	AXOD.THW06
602A	Thrust Washer - Driven Sprocket Support to Band Drum (66.29mm ID x 2.90mm 1 Tab) .	95-ON	AR	AXOD.THW07
603A	Forward Drum to Low Sprag 1.55mm (4 Tab Black) .....	95-ON	1	AXOD.THW19
650A	Bearing Drive Sprocket Support.....	95-ON	1	AXOD.THW13
651A	Bearing - Driven Sprocket Supp to Direct C. Drum (66mm OD) ..	95-ON	1	AXOD.THW03
652C	Bearing - Intermediate Clutch to Clutch Housing (58.14mm x 38.05mm).....	95-ON	1	AXOD.THW09
654C	Bearing - Front to Rear Planet (66mm OD) .....	95-ON	1	AXOD.THW03
657D	Bearing - Final Drive to Case (63.50mm x41.66mm x7.62mm)	95-ON	1	AXOD.THW11
660E	Pump Shaft Support Bearing (Sonnax) .....	95-ON	1	AXOD.THW14
NI	Bearing - Final Drive to Final Drive Sun Gear .....	95-ON	1	AXOD.THW12
<b>ELECTRICAL COMPONENTS</b>				
700E	Sensor - Turbine Shaft .....	95-ON	1	AX4N.ELE01
701E	EPC Solenoid (White Connector).....	95-96	1	AX4N.SOL01
702E	Lock Up Solenoid With 2 'O' rings (PWM White Conn) .....	95-96	1	AXODE.SOL02
702E	Lock Up Solenoid With 2 'O' rings (PWM Blue Conn) .....	97-ON	1	AXODE.SOL05
703E	Shift Solenoid (SS1).....	95-ON	1	AXODE.SOL04
704E	Shift Solenoid (SS2).....	95-ON	1	AXODE.SOL04
705E	Shift Solenoid (SS3).....	95-ON	1	AXODE.SOL04
706E	Wire Harness, Internal (AX4N) .	95-ON	1	AX4N.ELE02
706E	Wire Harness, Internal (4F50N)	04-ON	1	AX4N.ELE03
NI	Trans Oil Temp Sensor .....	95-ON	1	AXODE.ELE04
<b>VALVE BODY PARTS</b>				
Kit	Shift Kit (Transgo) .....	95-ON	1	AX4N.SK01
Kit	Pressure Regulator Valve Oversize (Sonnax® Requires Tool AXODE.VA14) ( <a href="#">Click Here for More Info</a> ).....	91-ON	1	AXODE.VA13
Kit	Tool Kit for AXODE.VA13 (Sonnax®).....	91-ON	1	AXODE.VA14

ILL NO.	DESCRIPTION	YEARS	QTY	PART NO
<b>VALVE BODY PARTS Cont...</b>				
NI	Bypass Control Sleeve.....	95-ON	1	AX4N.VA01
NI	Sleeve & Plunger Kit Bypass Control (Sonnax).....	95-ON	1	AX4N.VA03
NI	Line Pressure Modulator Valve & Sleeve (Reduces Soft Shifts Sonnax)...	95-ON	1	AX4N.VA02
NI	Forward Control Valve Kit (Sonnax) .....	95-ON	1	AX4N.VA04
NI	Boost Valve (Factory Style).....	86-ON	1	AX4N.VA06
<b>HARD PARTS</b>				
800A	Reluctor Ring, Driven Sprocket	95-ON	1	AX4N.SEN01
802A	Overdrive Clutch Drum .....	95-ON	1	AXODE.DRU02
803A	Race - Inner Dir Overrun Clutch	95-ON	1	AXODE.OWC02
804A	Sprag - Direct Overrun Clutch (Plastic Cage 14.57mm Thick) ..	95-ON	1	AXODE.OWC01
805A	Race Direct OWC Outer .....	95-ON	1	AXODE.OWC03
806B	Direct & Intermediate C. Drum..	95-ON	1	AXODE.DRU01
808C	PLanetary Set (Front & Rear With Sun Shell....	95-ON	1	AX4N.PL01
809C	Intermediate Clutch Hub (With 27mm Splines).....	95-ON	1	AXOD.HUB03
810C	Front Sun Gear & Shell (With 36 Drive Lugs & 1 Bush)..	95-ON	1	AX4N.POT01
811C	Reverse Drum (11.18mm OD Oil Hole).....	95-ON	1	AX4N.DRU01
813C	Rear Planetary (45 Internal Splines).....	95-ON	1	AXOD.PL05
819D	Planet Support & Piston Housing Rear.....	95-ON	1	AXODE.SUP01
819D	Planet Support & Piston Housing Rear (Aluminium) .....	95-ON	1	AX4N.SUP01
819D	Planet Support Kit (Modification for 91-96) .....	96-ON	1	AX4N.SUP02
821D	Sun Gear Final Drive (30T).....	95-01	1	AX4N.SUN01
821D	Sun Gear Final Drive (29T).....	01-ON	1	AX4N.SUN02
825D	Final Drive Ring Gear .....	95-ON	1	AX4N.GE01
826E	Cover, Oil Pump .....	94-ON	1	AXODE.PUM02
827E	Pump Assembly (Casting # RF-F4DP-7B324-AB) (With 5 Solenoids).....	94-97	1	AX4N.PUM01
827E	Pump Assembly (Casting # RF-F8DP-7B324-AA) (With 5 Solenoids).....	94-97	1	AXODE.PUM03
828E	Valve Body Assembly.....	94-97	1	AX4N.VB01
828E	Valve Body Assembly.....	98-ON	1	AX4N.VB02
830E	Drive Chain 20mm Wide (43 Links with 1 Bronze Link)....	95-ON	1	AXOD.CH01
830E	Drive Chain 24mm Wide (43 Links with 1 Black Link) .....	95-ON	1	AXOD.CH02
830E	Drive Chain 20mm Wide (44 Links with 2 Copper Links)..	96-ON	1	AXODE.CH03
834E	Stator Support Assy (Sonnax®)	95-ON	1	AXOD.SUP06
835E	Cover - Coast Servo Piston (Molded).....	95-ON	1	AXOD.COV01
<b>SPECIAL ITEMS</b>				
<b>TOOLS &amp; MANUALS</b>				
NI	ATSG Rebuild Manual .....	95-ON		AX4N.MAN01
<a href="#">Click here to view special tools for this transmission</a>				