

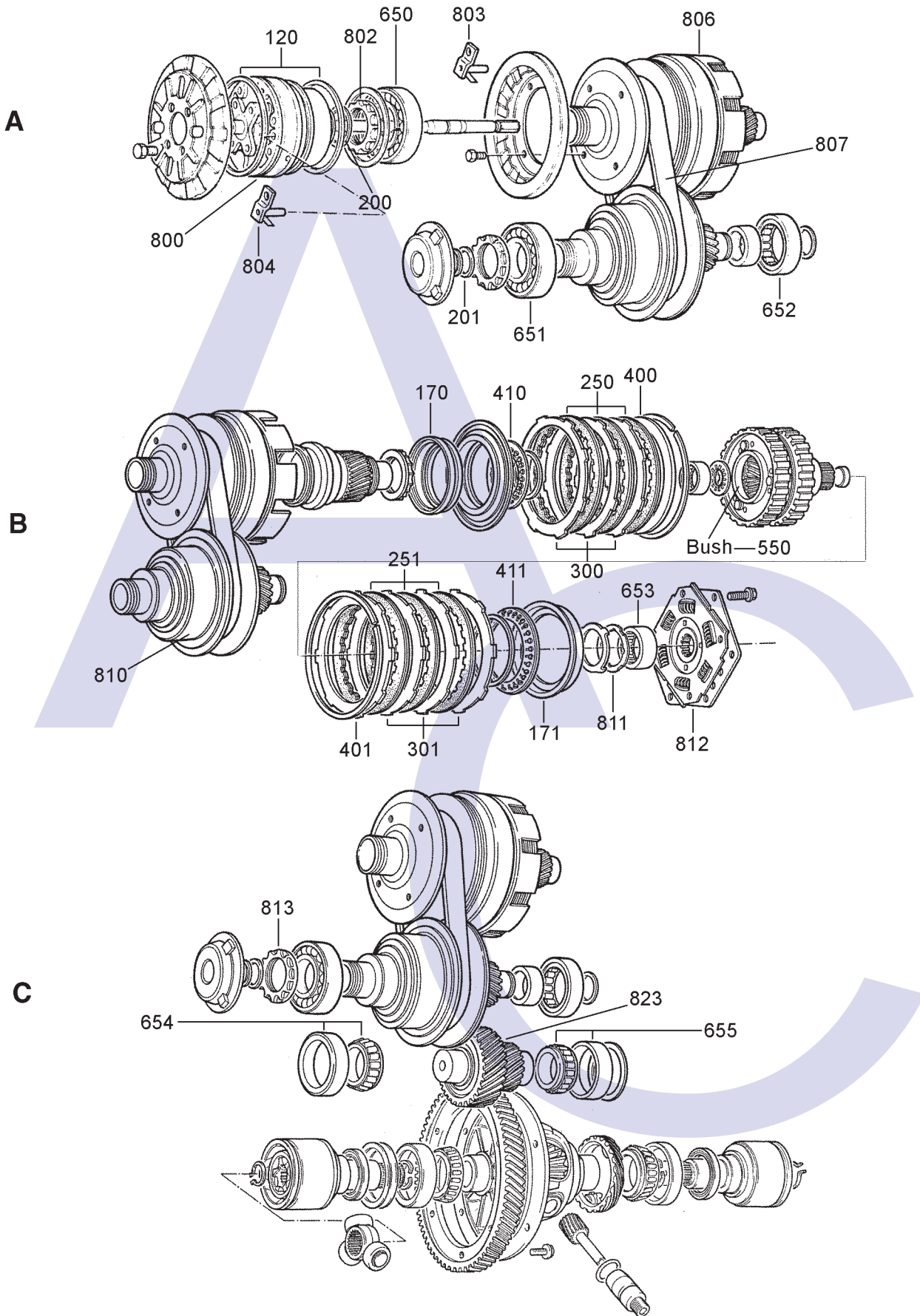
FORD CTX/CVT CONTINUOUSLY VARIABLE FWD (Hydraulic Control)



AUTOMATIC CHOICE



THE AUTOMATIC TRANSMISSION PARTS WAREHOUSE



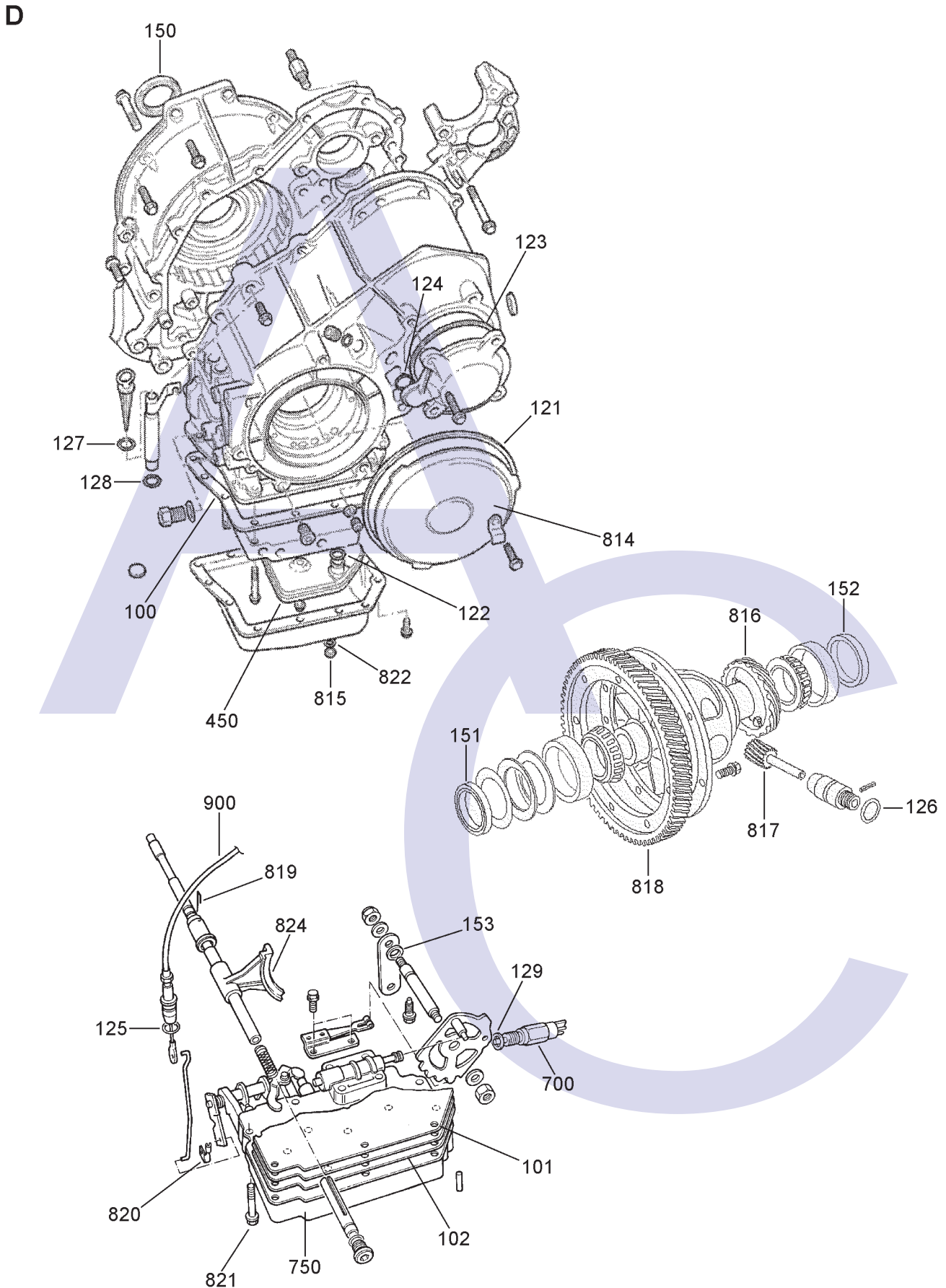
FORD CTX/CVT CONTINUOUSLY VARIABLE FWD (Hydraulic Control)



AUTOMATIC CHOICE



THE AUTOMATIC TRANSMISSION PARTS WAREHOUSE



FORD CTX/CVT

CONTANTLY VARIABLE FWD (Hydraulic Control)



AUTOMATIC CHOICE



THE AUTOMATIC TRANSMISSION PARTS WAREHOUSE

ILL NO.	DESCRIPTION	YEARS	QTY	PART NO
KITS				
Kit	Overhaul Kit CVT (Van Doorne) 87-89	87-89	1	CVT.OHK01
Kit	Overhaul Kit CTX (Pre Zetec) ... 89-95	89-95	1	CTX.OHK02
Kit	Overhaul Kit CTX (Zetec)..... 95-ON	95-ON	1	CTX.OHK03
Kit	Overhaul Kit CTX/CVT (Combination Kit Precision) 87-ON	87-ON	1	CVT.OHK51
Kit	Gasket & Rubber CVT (Van Doorne)	87-89	1	CVT.GSK01
Kit	Gasket & Rubber Less Lip Seals (Pre Zetec)	89-95	1	CTX.GSK01
Kit	Gasket & Rubber Less Lip Seals (Zetec).....	95-ON	1	CTX.GSK02
GASKETS				
100D	Pan Gasket CVT (Van Doorne). 87-89	87-89	1	CTX.GAS14
100D	Pan Gasket CTX (OEM)	89-ON	1	CTX.GAS01
100D	Pan Gasket CTX (Bryco)	89-ON	1	CTX.GAS11
101D	Valve Body Gasket Upper (Pre Zetec)	89-95	1	CTX.GAS02
101D	Valve Body Gasket Upper (Zetec).....	95-ON	1	CTX.GAS05
102D	Valve Body Gasket Lower (Pre Zetec)	89-95	1	CTX.GAS03
102D	Valve Body Gasket Lower (Zetec).....	95-ON	1	CTX.GAS06
RUBBER COMPONENTS				
Kit	'O' Ring Kit	89-ON	1	CTX.ORK01
120A	Pump 'O'Ring (Front & Rear)....	87-ON	2	CTX.OR04
121D	Primary Cover O'Ring.....	87-ON	1	CTX.OR05
122D	Filter 'O'Ring	89-ON	1	CTX.OR09
123D	Secondary Cover 'O' Ring (Large)	87-ON	1	CTX.OR06
124D	Secondary Cover 'O' Ring (Small).....	87-ON	1	CTX.OR07
125D	Throttle Cable 'O' Ring.....	87-ON	1	CTX.OR01
126D	Speedo Housing 'O' Ring.....	87-ON	1	CTX.OR03
127D	Dipstick to Tube 'O' Ring.....	87-ON	1	CTX.OR10
128D	Dipstick Tube to Case 'O' Ring .	87-ON	1	CTX.OR08
129D	Inhibitor Switch 'O' Ring.....	87-ON	1	CTX.OR12
NI	Secondary Piston 'O' Ring Viton Rubber (Fits Open Secondary Drums) ..	87-ON	1	CTX.OR13
NI	Primary Drum 'O' Ring (Fits Primary Piston)	87-ON	1	CTX.OR02
NI	Fwd Clutch Inner Lip Seal.....	89-ON	1	CTX.LIP01
NI	Fwd Clutch Outer Lip Seal.....	89-ON	1	CTX.LIP02
NI	Rev Clutch Inner Lip Seal.....	89-ON	1	CTX.LIP03
NI	Rev Clutch Outer Lip Seal	89-ON	1	CTX.LIP04
METAL CLAD SEALS				
150D	Input Shaft Seal (52mm x 38mm x 7mm)	89-ON	1	CTX.MCS11
151D	Drive Shaft Seal L/H (55mm x 40mm x 10mm)	89-ON	1	CTX.MCS12
152D	Drive Shaft Seal R/H (55mm x 40mm x 10mm)	89-ON	1	CTX.MCS12
153D	Selector Shaft Seal (22mm x 12mm x 7mm)	89-ON	1	CTX.MCS13
PISTONS				
170B	Fwd Clutch Moulded Piston	89-ON	1	CTX.PIS01
170B	Fwd Clutch Aluminum	89-ON	1	CTX.PIS03
171B	Rev Clutch Moulded Piston.....	89-ON	1	CTX.PIS02

ILL NO.	DESCRIPTION	YEARS	QTY	PART NO
SEALING RINGS				
Kit	Sealing Ring Kit	87-ON	1	CTX.SRK01
200A	Primary Shaft (Pump Nose).....	87-ON	1	CTX.SSR01
201A	Secondary Shaft	87-ON	1	CTX.SSR02
FRICITION PLATES				
250B	Forward Clutch OEM	87-ON	3	CTX.FRP02
251B	Reverse Clutch OEM	87-ON	3	CTX.FRP02
STEEL PLATES				
300B	Forward Clutch OEM (Pre Zetec)	89-95	3	CTX.STP01
300B	Forward Clutch OEM (Zetec)	95-ON	3	CTX.STP02
301B	Reverse Clutch OEM (Pre Zetec)	89-95	3	CTX.STP01
301B	Reverse Clutch OEM (Zetec)....	95-ON	3	CTX.STP02
PRESSURE PLATES				
400B	Forward Clutch (Zetec)	5/94-ON	1	CTX.PP01
401B	Reverse Clutch (Zetec)	5/94-ON	1	CTX.PP01
NI	Pressure Plate Spacer (1600cc Zetec)	5/94-ON	1	CTX.SP01
SPRINGS & CIRCLIPS				
410B	Fwd Clutch Diaphragm Spring ..	87-ON	1	CTX.DIA01
411B	Rev Clutch Diaphragm Spring ..	87-ON	1	CTX.DIA02
FILTERS				
Kit	CTX Filter Kit.....	89-ON	1	CTX.FILKIT01
450D	Filter CVT (Van Doorne)	87-89	1	CVT.FIL11
450D	Filter CTX.....	89-ON	1	CTX.FIL12
BUSHINGS				
550B	Planetary Bush.....	89-ON	1	CTX.BUS10
THRUST WASHERS & BEARINGS				
650A	Primary Bearing	87-ON	1	CTX.BE01
651A	Secondary Bearing	87-ON	1	CTX.BE02
652A	Pinion Support Roller Bearing	87-ON	1	CTX.BE03
653B	Input Shaft Bearing (Needle)	89-ON	1	CTX.BE04
654C	Idler Gear Bearing L. Hand.....	87-ON	1	CTX.BE06
655C	Idler Gear Bearing R. Hand	87-ON	1	CTX.BE06
ELECTRICAL COMPONENTS				
700D	Inhibitor Switch (3 Prong).....	89-93	1	CTX.INH01
700D	Inhibitor Switch (4 Prong).....	94-ON	1	CTX.INH02

FORD CTX/CVT CONTANTLY VARIABLE FWD (Hydraulic Control)



AUTOMATIC CHOICE



THE AUTOMATIC TRANSMISSION PARTS WAREHOUSE

ILL NO.	DESCRIPTION	YEARS	QTY	PART NO
VALVE BODY PARTS				
Kit	Modified Spring Kit	89-95	1	CTX.SK01
NI	Spring Clutch Control Valve (Outer 1300cc).....	89-95	1	CTX.SPR08
NI	Spring Clutch Control Valve (Middle 1300cc)	89-95	1	CTX.SPR09
NI	Spring Clutch Control Valve (Inner 1300cc).....	89-95	1	CTX.SPR07
NI	Spring Clutch Control Valve Outer (Modified Anti Stall 1600cc)	89-95	1	CTX.SPR10
750D	Rebuilt Valve Body Pre Zetec (1600cc 'D' Ident)	89-95	1	CTX.VB01
750D	Rebuilt Valve Body Pre Zetec (1400cc 'H' Ident)	89-95	1	CTX.VB03
750D	Rebuilt Valve Body Pre Zetec (1300cc Inj 'B' Ident)	89-95	1	CTX.VB04
750D	Rebuilt Valve Body Pre Zetec (1100cc Fiesta 'A' Ident).....	89-95	1	CTX.VB05
750D	Rebuilt Valve Body (Fiat Tipo).....	89-95	1	CTX.VB06
750D	Rebuilt Valve Body Zetec (1250cc 'AE' Ident).....	95-ON	1	CTX.VB07
750D	Rebuilt Valve Body (Mazda 121).....	95-ON	1	CTX.VB07
750D	Rebuilt Valve Body Zetec (1600cc 'DE' Ident).....	95-ON	1	CTX.VB08
750D	Rebuilt Valve Body Zetec (1400cc Fiesta)	95-ON	1	CTX.VB09
HARD PARTS				
800A	Oil Pump (New) CTX Only	89-ON	1	CTX.PUM01
800A	Oil Pump (Rebuilt) CTX Only	89-ON	1	CTX.PUM31
802A	Nut Primary CTX (M35x1.5).....	89-ON	1	CTX.NUT02
803A	Pitot Tube Primary	87-ON	1	CVT.TU01
804A	Pitot Tube Engine.....	87-ON	1	CTX.TU03
806A	Primary Drum CVT (Rebuilt)	87-89	1	CTX.DRU01
806A	Primary Drum CTX (Rebuilt)	89-ON	1	CTX.DRU03
807A	Drive Belt	87-ON	1	CTX.CH01
810B	Secondary Drum CVT/CTX (Rebuilt Open Type).....	87-ON	1	CTX.DRU05
811B	End Float Shim 1.3mm	87-ON	1	CTX.SHIM01
811B	End Float Shim 1.4mm	87-ON	1	CTX.SHIM06
811B	End Float Shim 1.5mm	87-ON	1	CTX.SHIM02
811B	End Float Shim 1.9mm	87-ON	1	CTX.SHIM03
811B	End Float Shim 2.0mm	89-ON	1	CTX.SHIM04
812B	Damper Plate Pre Zetec	87-1/95	1	CTX.DAM02
812B	Damper Plate Zetec	95-ON	1	CTX.DAM03
813C	Nut Secondary CTX (M30x1.5). 89-ON	89-ON	1	CTX.NUT01
814D	Primary End Cover.....	89-ON	1	CTX.COV01
815D	Oil Pan Drain Plug	89-ON	1	CTX.PLU01
816D	Speedo Drive Gear	89-ON	1	CTX.GE02
817D	Speedo Driven Gear (Escort 1600 19T)	89-ON	1	CTX.GE01
818D	Crown Wheel 1600cc Zetec.....	95-ON	1	CTX.DIFF01
819D	Sensor Shaft Retaining Pin.....	89-ON	1	CTX.PIN01
820D	Clip - Throttle Rod to V. Body....	89-ON	1	CTX.CL03
821D	Modified Valve Body Bolt	89-ON	1	CTX.NUT03
822D	Drain Plug Sealing Washer.....	89-ON	1	CTX.WA01
823C	Idler Gear (19/34 Teeth).....	89-ON	1	CTX.GE03
824D	Brass Ratio Sensor Fork (CTX) 89-ON	89-ON	1	CTX.SEN01
NI	Sensor Shaft Retaining Clip.....	89-ON	1	CTX.CL01
NI	Rubber Sealing Bung (For Secondary Pressure Adjusting Bolt).....	89-ON	1	CTX.RUB01
NI	Drive Belt Lube Tube	87-ON	1	CTX.TU02
NI	Pitot Supply Tube.....	87-ON	1	CTX.TU04
NI	Plastic Selector Cable Clevis....	89-ON	1	CTX.CL02
NI	Steel Ball Bearing (6.00mm) (Secondary Sliding Shaft)	87-ON	9	CTX.BALL

ILL NO.	DESCRIPTION	YEARS	QTY	PART NO
HARD PARTS Cont...				
NI	Steel Ball Bearing (5.90mm) (Secondary Sliding Shaft)	87-ON	9	CTX.BALL01
NI	Steel Ball Bearing (6.00mm) (Primary Sliding Shaft).....	87-ON	6	CTX.BALL
NI	Steel Ball Bearing (5.90mm) (Primary Sliding Shaft).....	87-ON	6	CTX.BALL01
CABLES				
900D	Throttle Control Cable (Fiesta 1.1 & 1.4 Carb Model)...	89-ON	1	CTX.CAB01
900D	Throttle Control Cable (Fiesta 1.3 & 1.4 CFI).....	12/91-ON	1	CTX.CAB02
900D	Throttle Control Cable (Escort/Orion 1.6).....	8/90-8/92	1	CTX.CAB03
900D	Throttle Control Cable (Fiesta 1.25 Zetec).....	8/95-2/00	1	CTX.CAB04
900D	Throttle Control Cable (Escort 1.60 Zetec)	1/95-4/98	1	CTX.CAB04
SPECIAL TOOLS				
Click here to view special tools for this transmission				