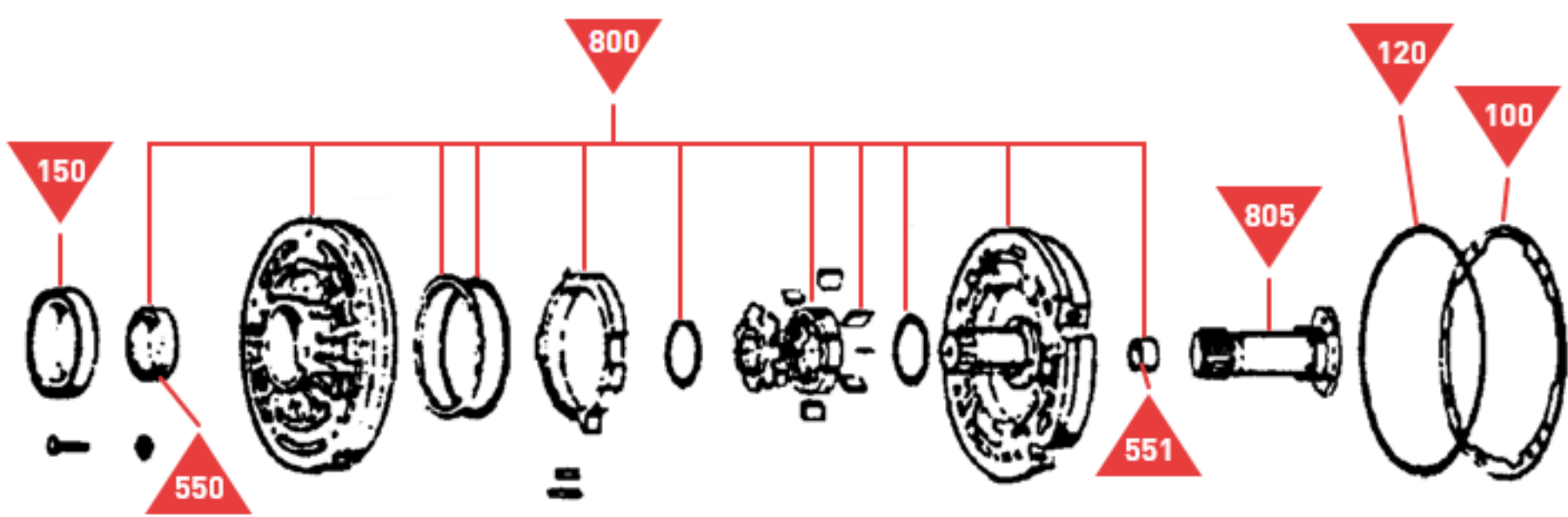
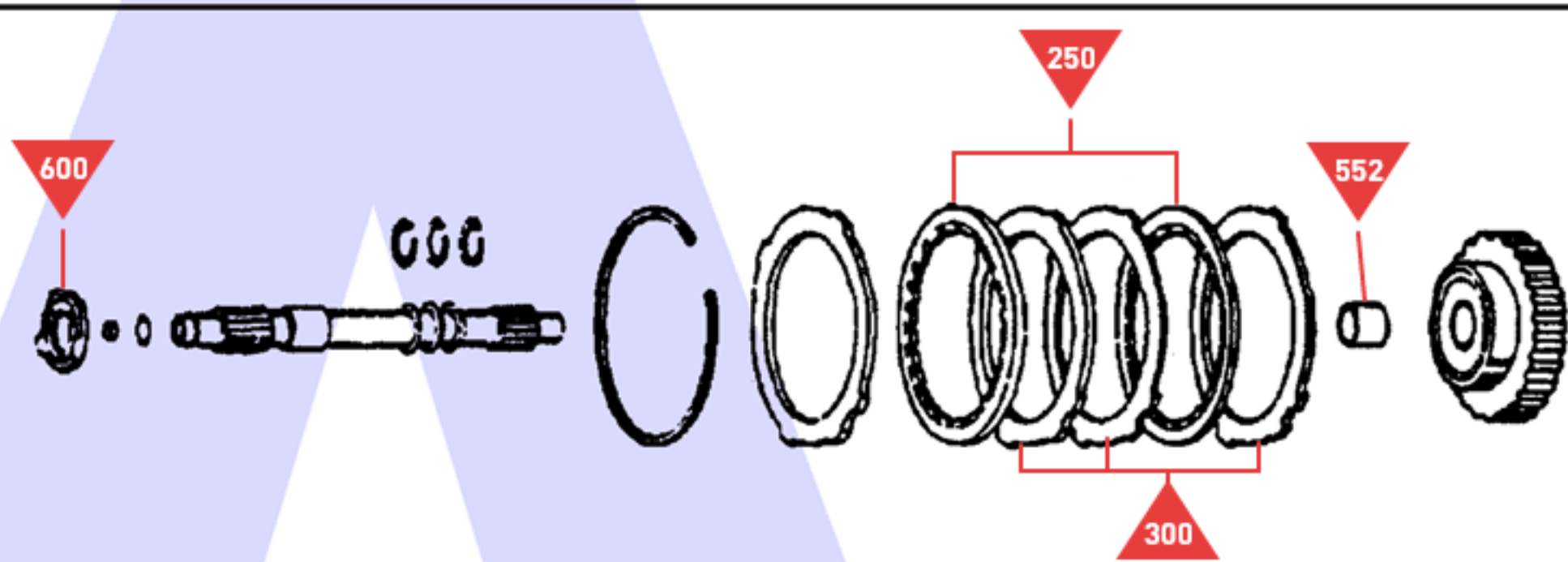


A

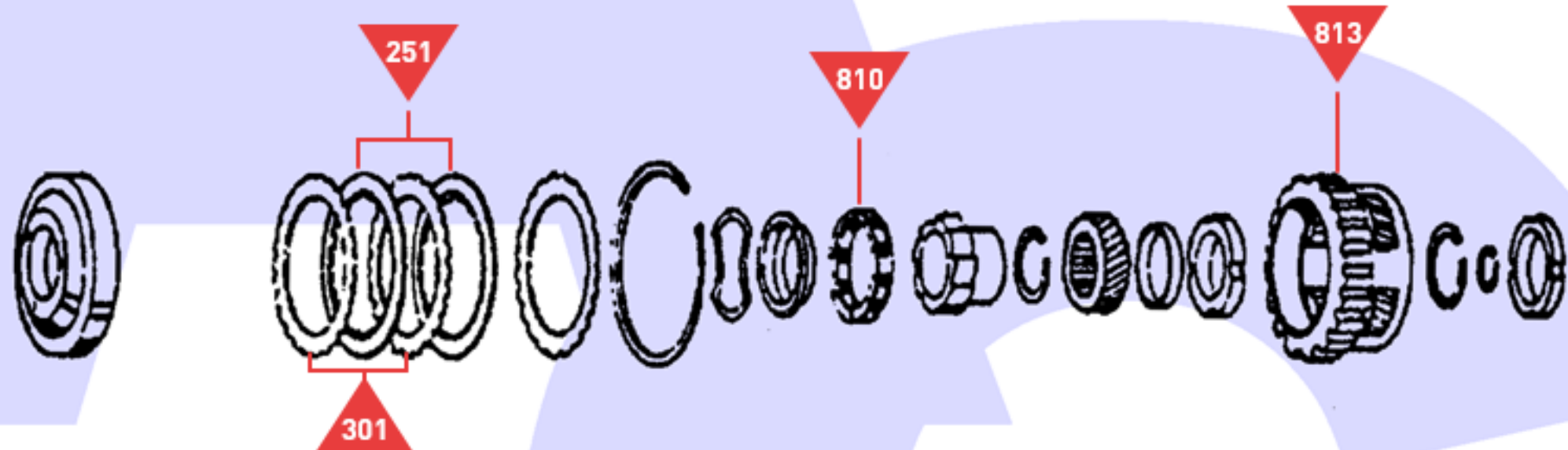


B



Fourth Clutch

C



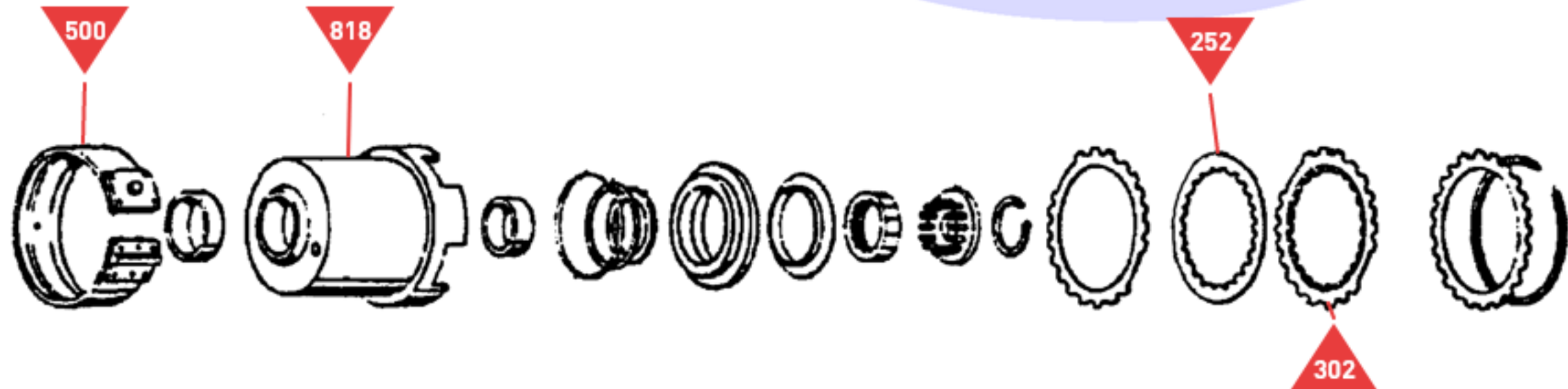
Overrun Clutch & One Way Clutch

D



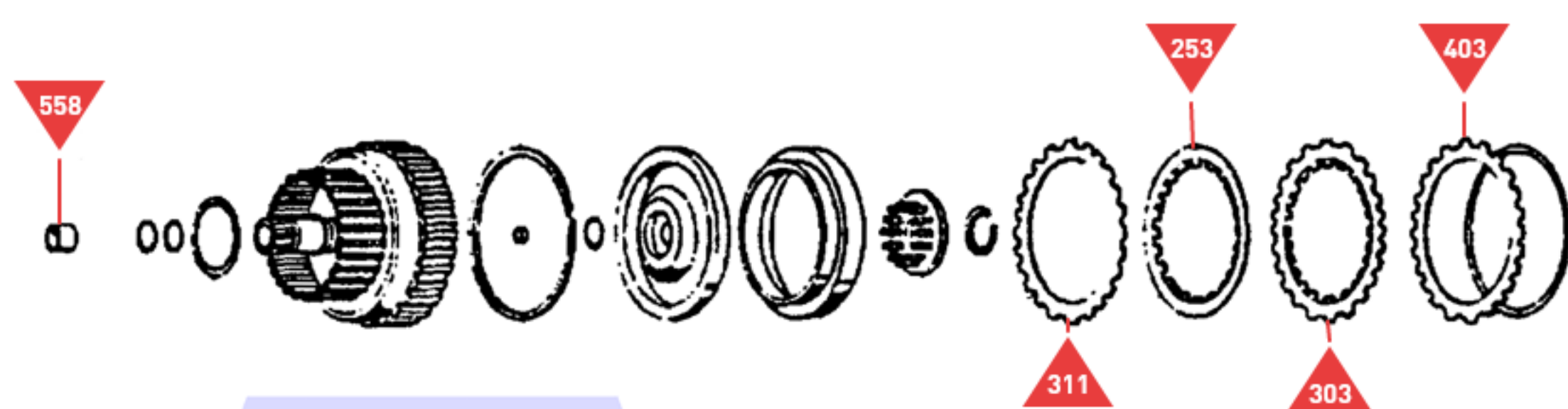
Overdrive Piston Assembly

E



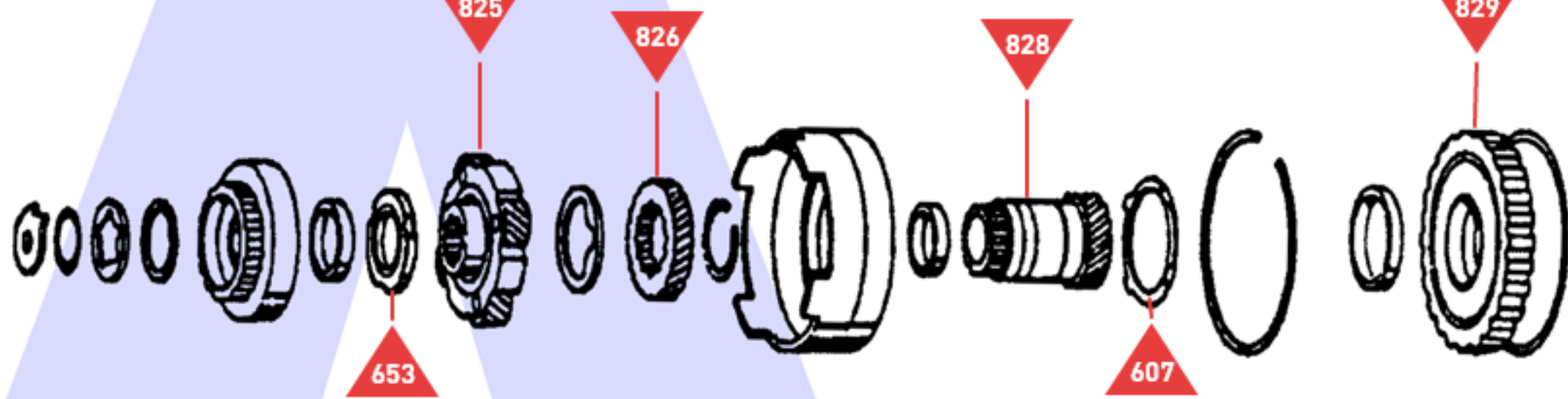
Direct Clutch

F



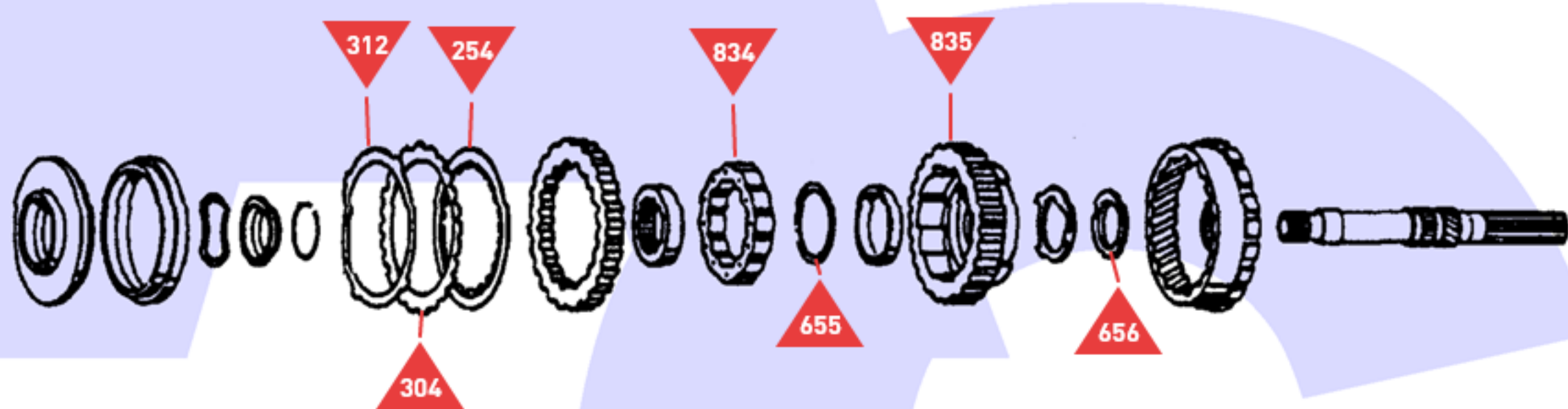
Forward Clutch

G



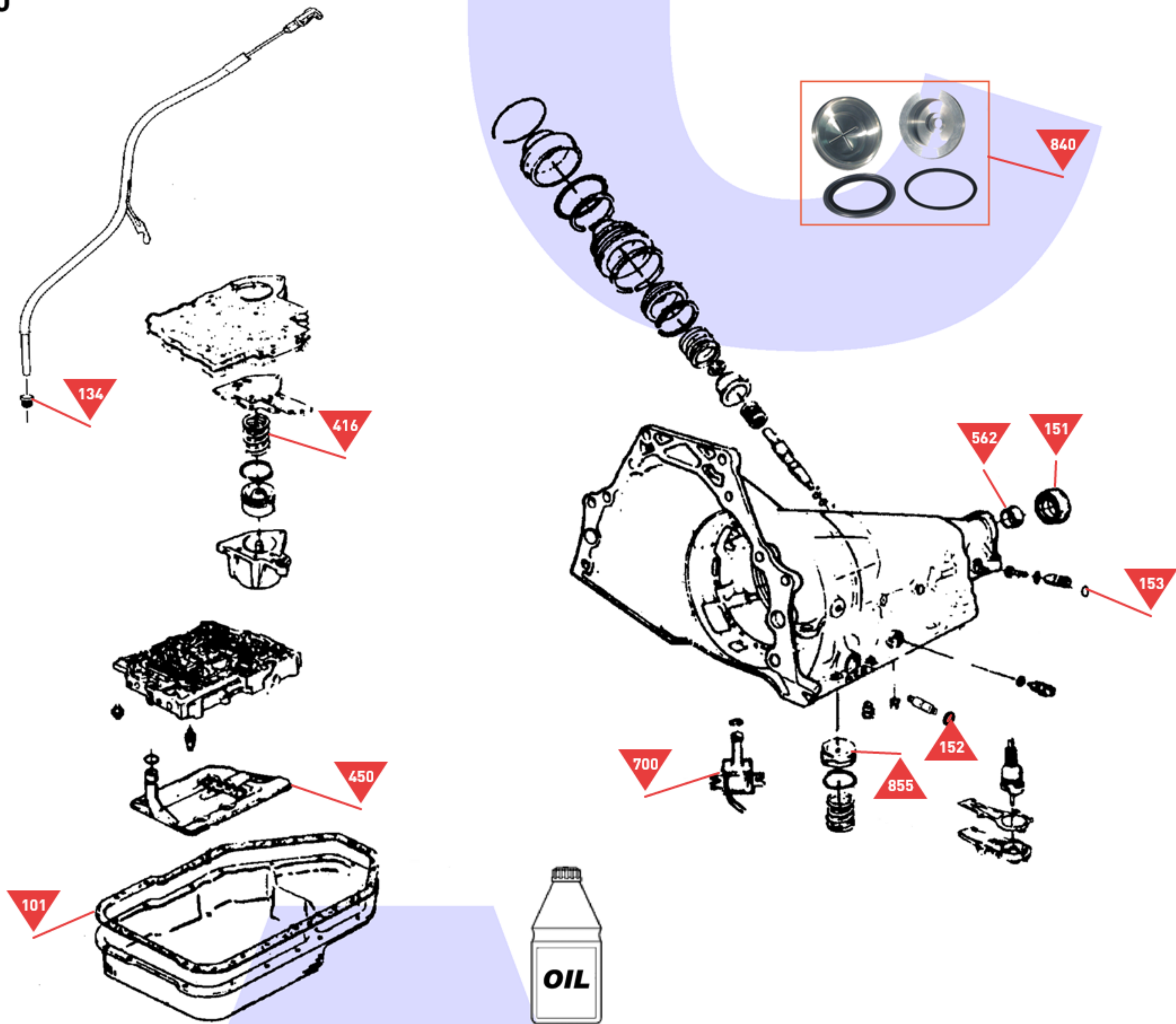
Front Planet, Sun Gear & Shell

H



Low Reverse Clutch & Low One Way Clutch

J



Casing, Valve Body, Oil Pan, Filter Etc.