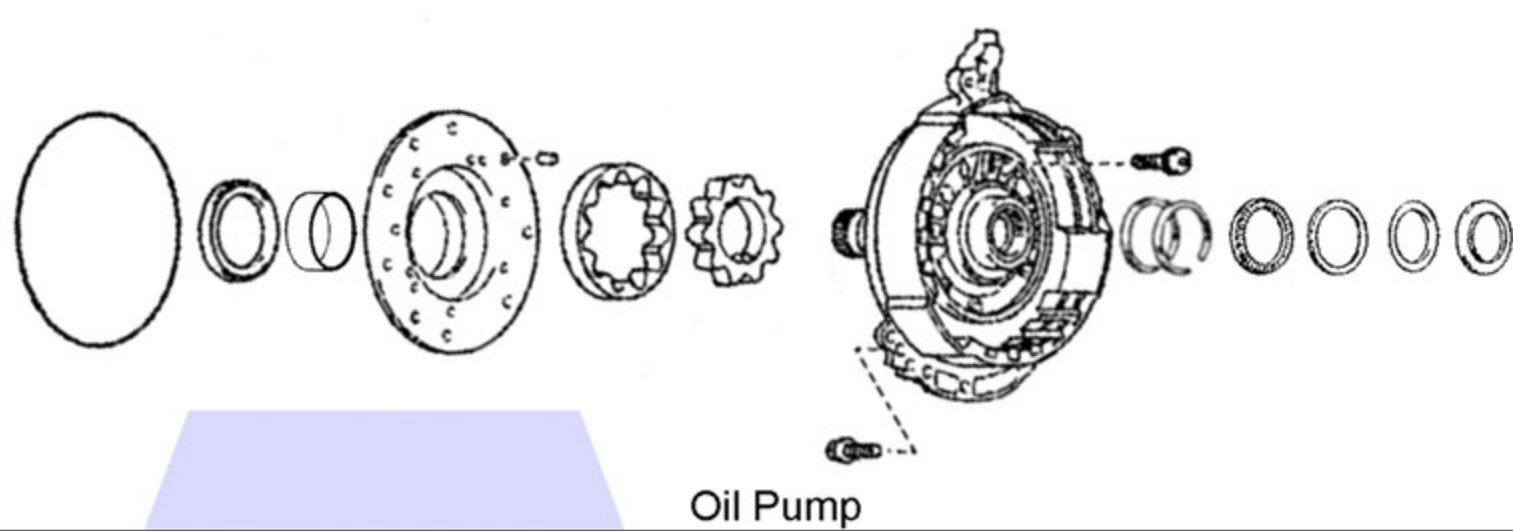
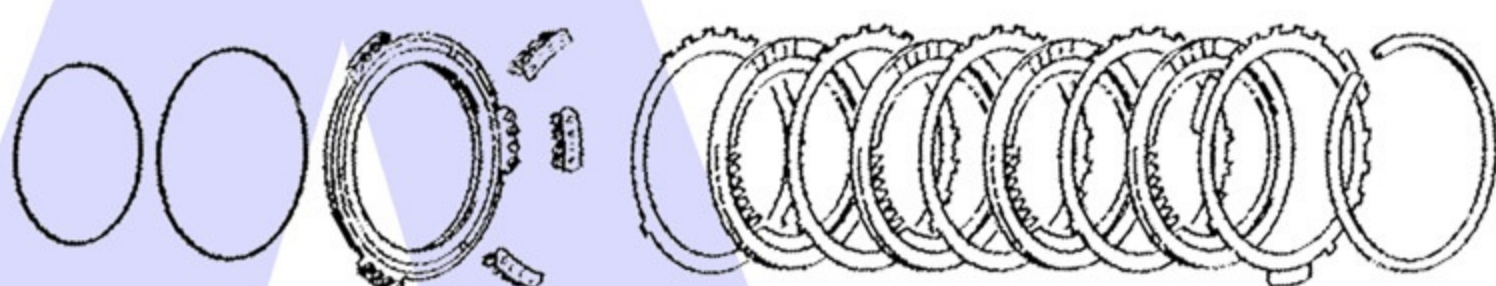


A



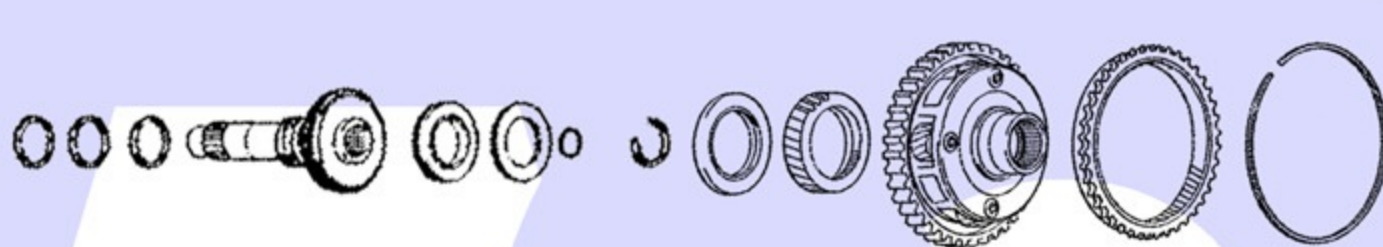
Oil Pump

B



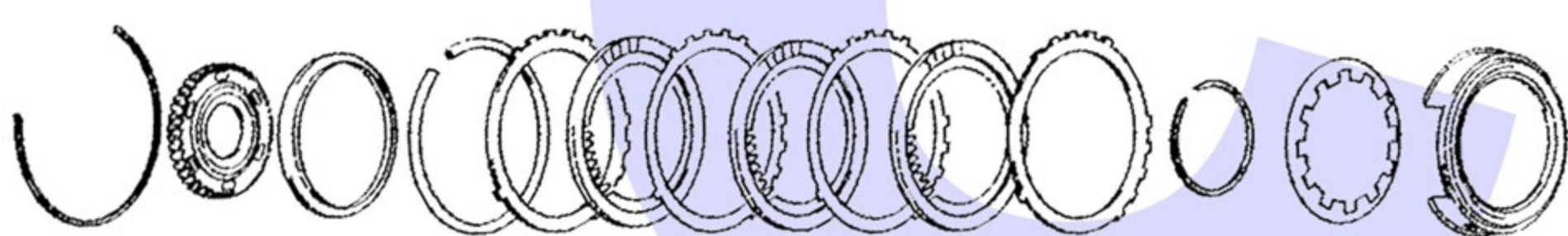
'B1' Brake

C



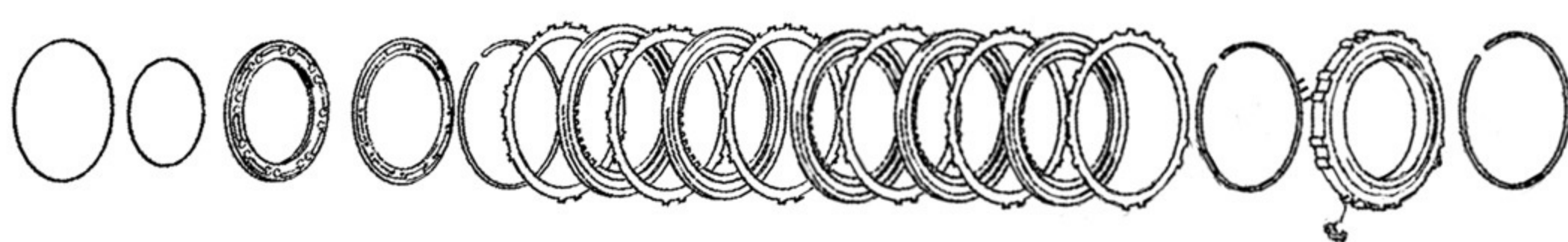
Input Shaft & Overdrive Planetary

D



'B3' Brake

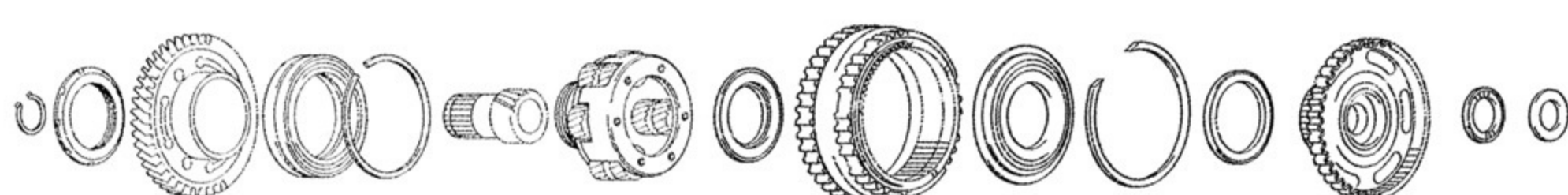
E



'B2' Brake (Low/Reverse)

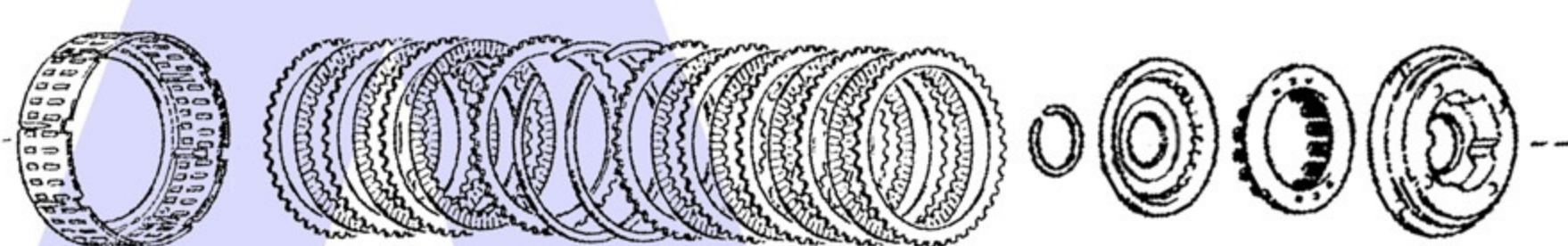
One Way Clutch

F



Planetary Assembly

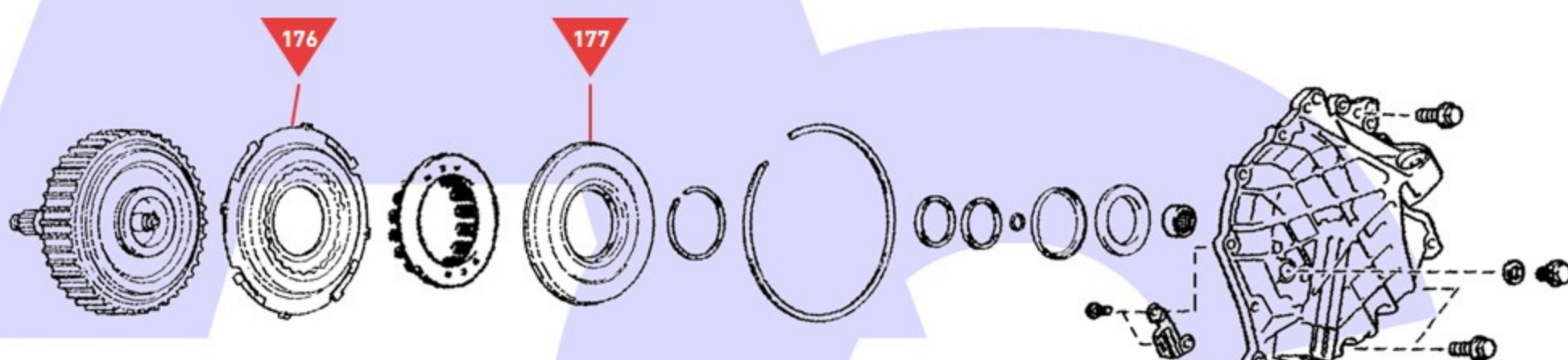
G



'C2' Clutch (Direct)

'C1' Clutch (Forward)

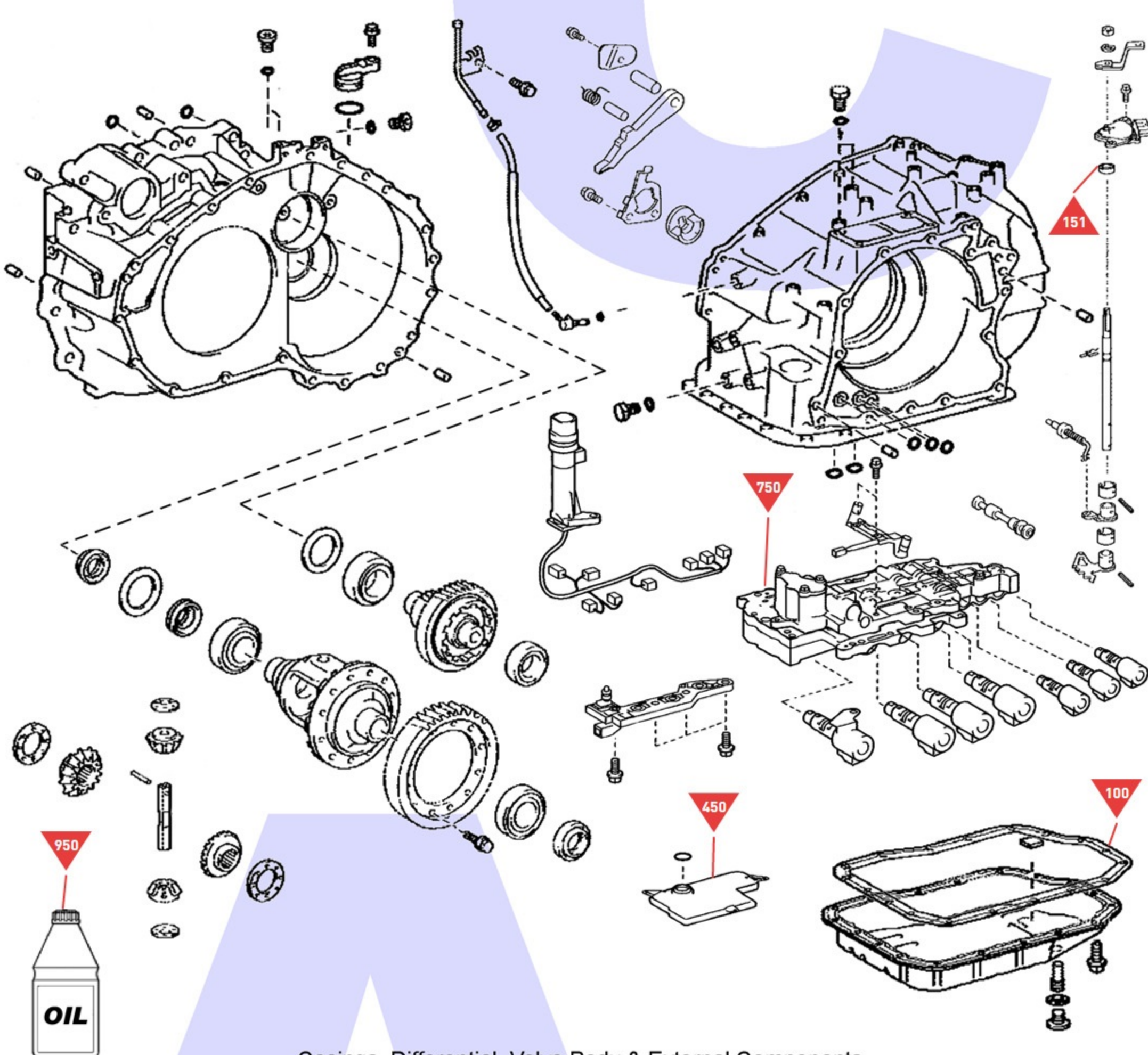
H



'C1' & 'C2' Clutch Drum

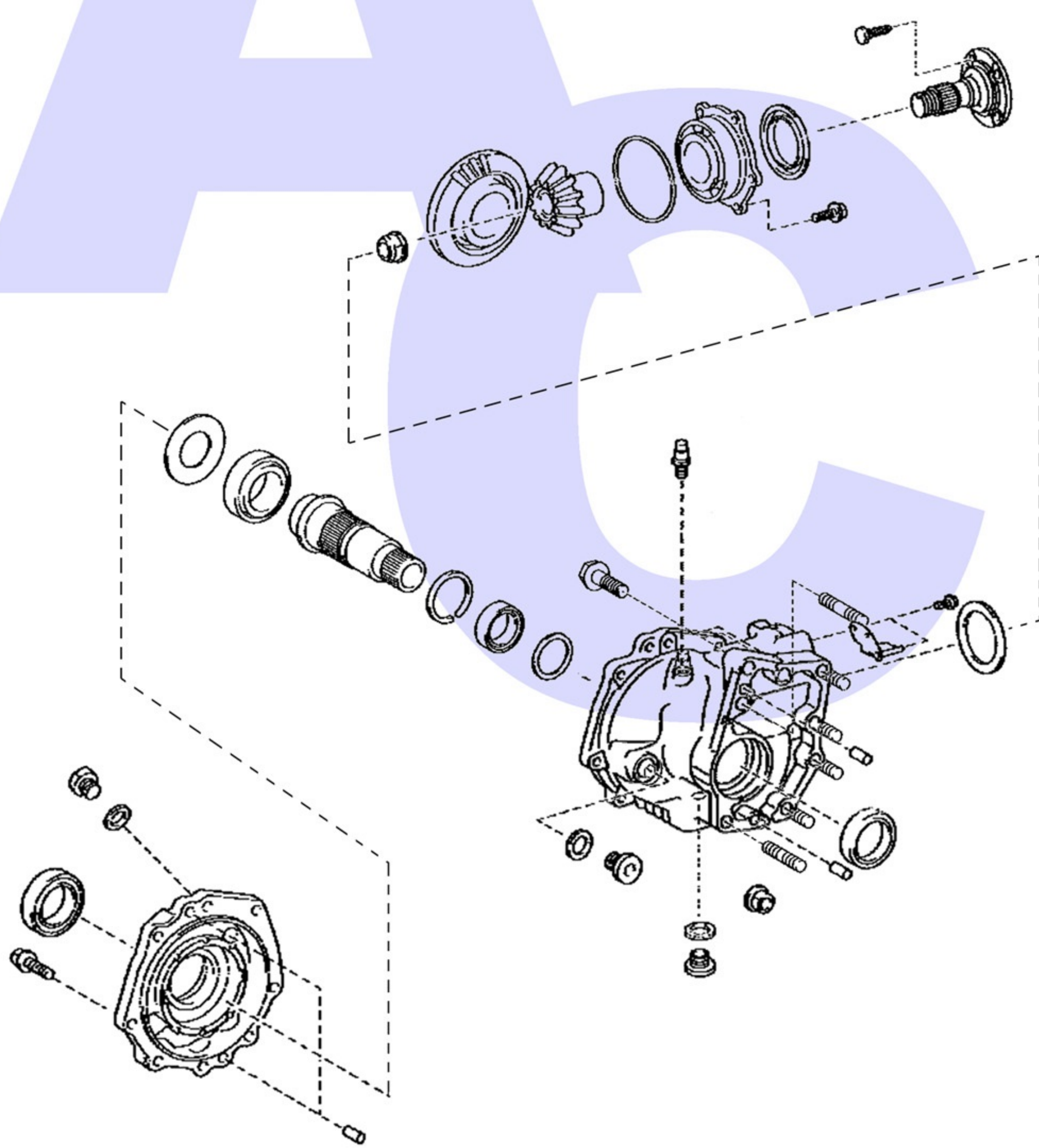
End Cover

J



Casings, Differential, Valve Body & External Components

K



Transfer Box Assembly